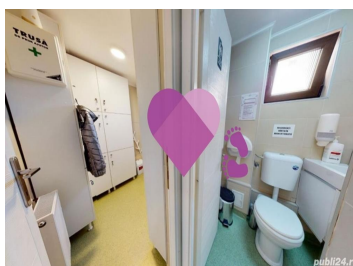
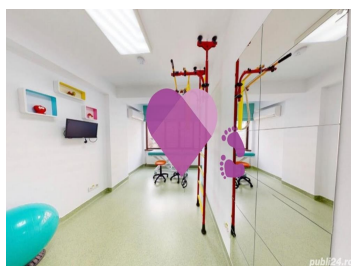
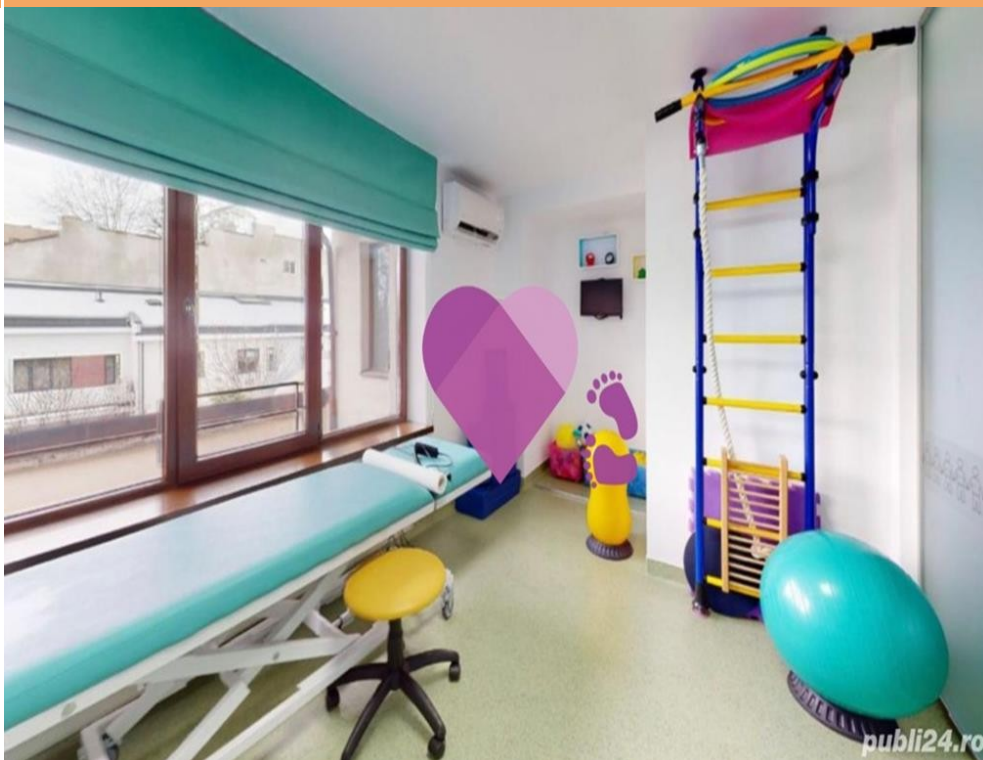


## B-dul Lacul Tei

### CARACTERISTICI

- ▶ **ZONA:** B-dul Lacul Tei
- ▶ **Suprafata utila:** 100 mp
- ▶ **Nr. camere:** 6
- ▶ **Etaj:** 2
- ▶ **Regim de inaltime:** D+P+3E



### FINISAJE/DOTARI

- ▶ **Alte dotari:** Supraveghere Video, AC, Centrala Termica, Faianta, Geamuri Termopan

### DESCRIERE

Imobilul este situat la cateva minute distanta de Stefan cel Mare in imediata vecinatate a Bulevardului Lacul Tei.

Facilitati:

- 6 cabinete medicale
- cabinetele sunt compartimentate prin pereti de sticla, usi de sticla cu inchidere, linoleum medical.
- Incalzire prin centrala proprie
- AC tip inverter in fiecare cabinet
- Supraveghere video
- Semnalistica reclama exterior/interior

3.000 EUR + TVA

0,04 BITCOIN + TVA

1,79 ETHEREUM + TVA