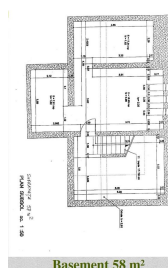
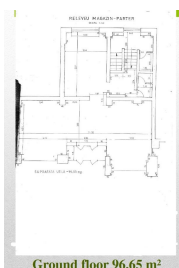
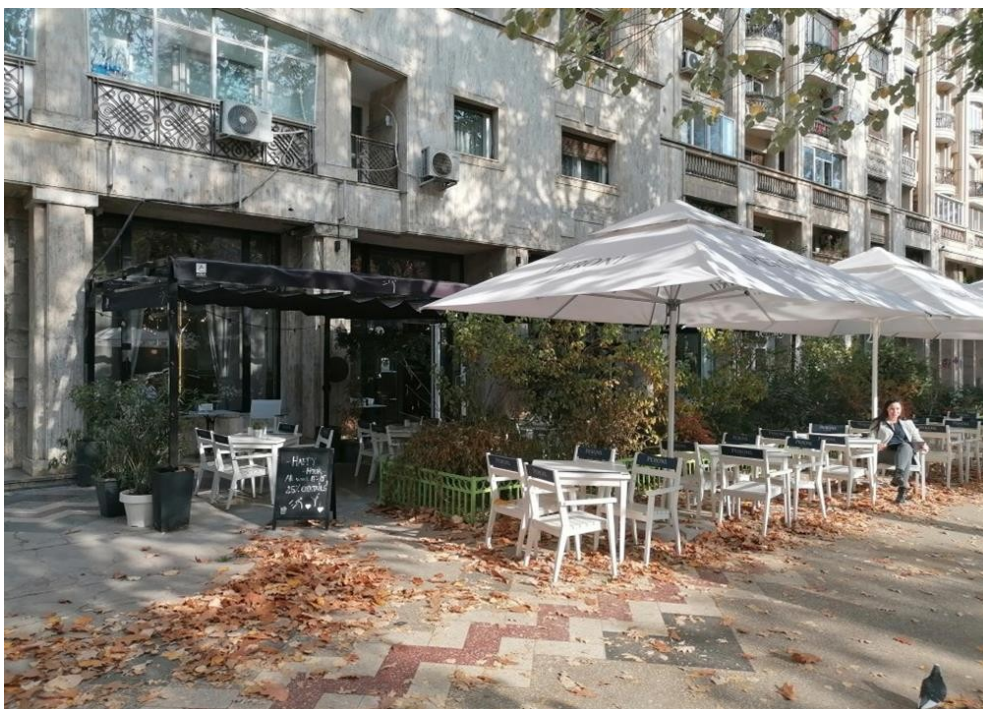


Unirii

Spatiu Comercial

CARACTERISTICI

- ▶ **ZONA:** Unirii
- ▶ **Suprafata utila:** 154.65 mp
- ▶ **Etaj:** P+S
- ▶ **Vitrina:** 12



DESCRIERE

Spatiul se afla situat pe B-dul Unirii, beneficiind de trafic auto si pietonal.

Spatiul este dispus la parter, avand o deschidere de 12 m.

Facilitati:

- deschidere 12 m

Spatiul este inchiriat pe 3 ani, pana in mai 2024 catre un restaurant.

Suprafata utila totala: 154.65 mp

Suprafata utila parter: 96.65 mp

Suprafata utila subsol: 58 mp

550.000 EUR + TVA

7,17 BITCOIN + TVA

328,01 ETHEREUM + TVA