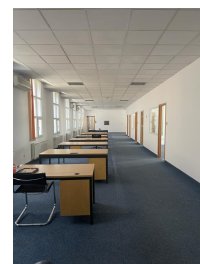
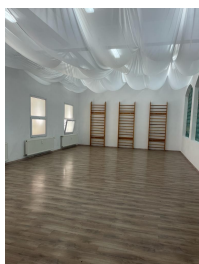
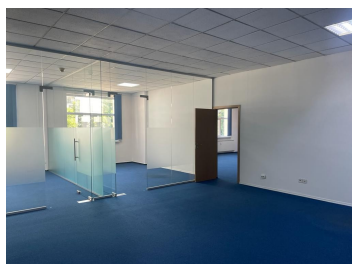


Calea Calarasilor

CARACTERISTICI

- ▶ **ZONA:** Calea Calarasilor
- ▶ **Suprafata utila:** 1100 mp
- ▶ **Regim de inaltime:** S+P+1



Desfasurare

Spatiu birouri: 650 mp

Hala: 450 mp

8,5 Euro/mp/luna+TVA birouri

7,5 Euro/mp/luna+TVA hala

DESCRIERE

Spatiul de birouri se afla situat la cateva minute de Piata Muncii si Calea Calarasilor. Acesta are in structura sa, si un spatiu ce poate fi folosit pentru depozitare sau mica productie, de circa 450 mp.

Facilitati:

- open space/ compartimentari
- sistem climatizare;
- curte
- sistem securitate;
- locuri parcare exterior.

8,50 EUR mp + TVA