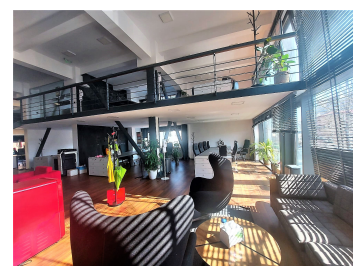
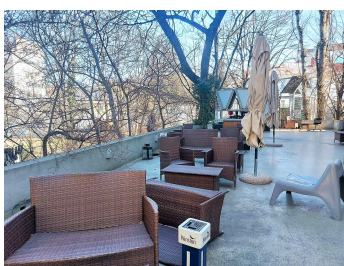
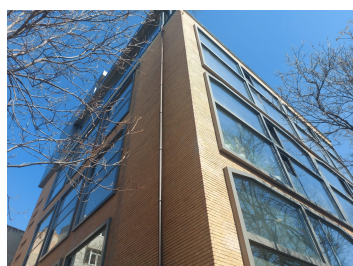
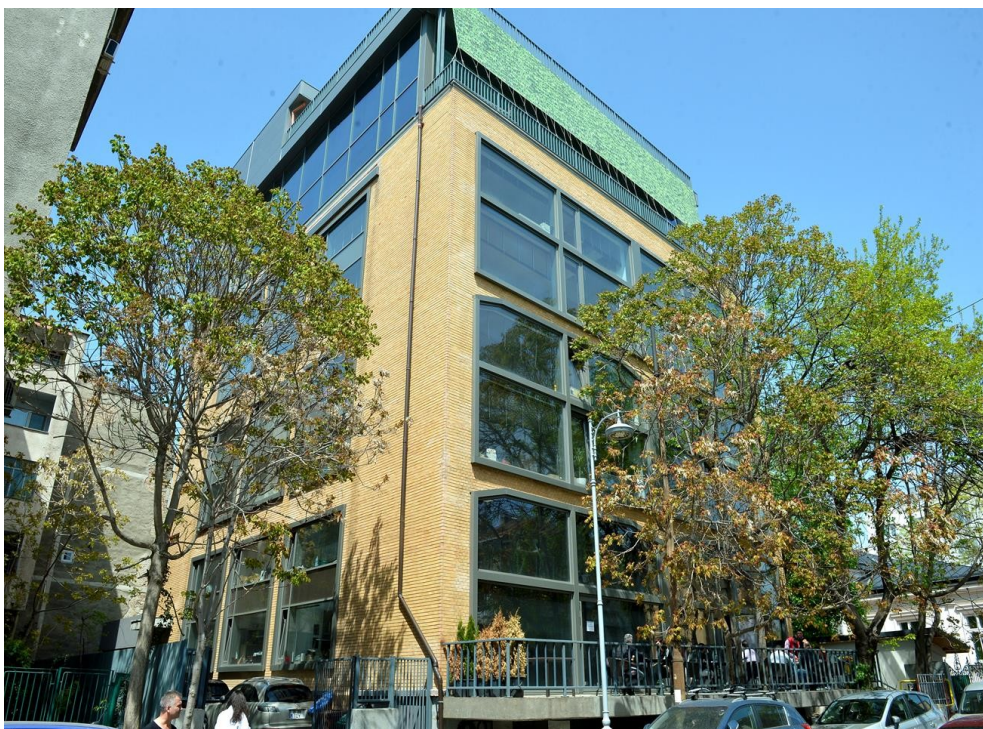


Calea Victoriei

Inchiriere Birouri

CARACTERISTICI

- ▶ **ZONA:** Calea Victoriei
- ▶ **Suprafata utila:** 630 mp
- ▶ **Nr. locuri de parcare:** 2
- ▶ **Etaj:** Et.1
- ▶ **An constructie:** 2016
- ▶ **Regim de inaltime:** S+P+6E



Desfasurare

Suprafete disponibile:

Etaj 1: 630 mp

Terasa: 70 mp

Preturi:

4.5 Euro/mp/luna + TVA- mentenanta

10 Euro/mp/luna + TVA - terasa

FINISAJE/DOTARI

- ▶ **Alte dotari:** Sistem de Alarma, AC, Lift, Conexiune Retea Vocea si Internet, Cablu TV

DESCRIERE

Imobilul este situat in apropiere de Calea Victoriei si Piata Romana beneficiind de acces facil catre toate mijloacele de transport in comun. Deasemenea, in imediata vecinatate se afla Hotelul Hilton, Golden Tulip si Novotel.

Facilitati:

- acces facil

- retea de telefonie si internet;
- 2 locuri de parcare
- receptie si paza
- sistem climatizare — ventiloconvectoare; - lift;

17 EUR mp + TVA