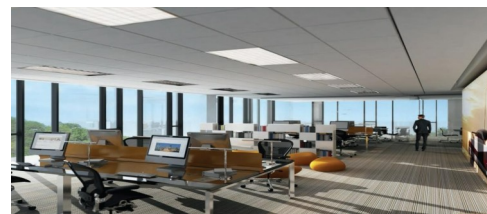
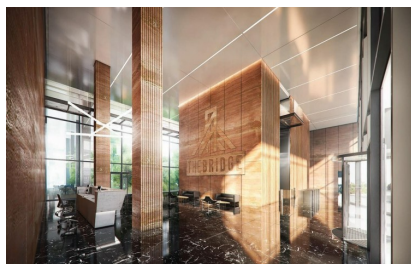
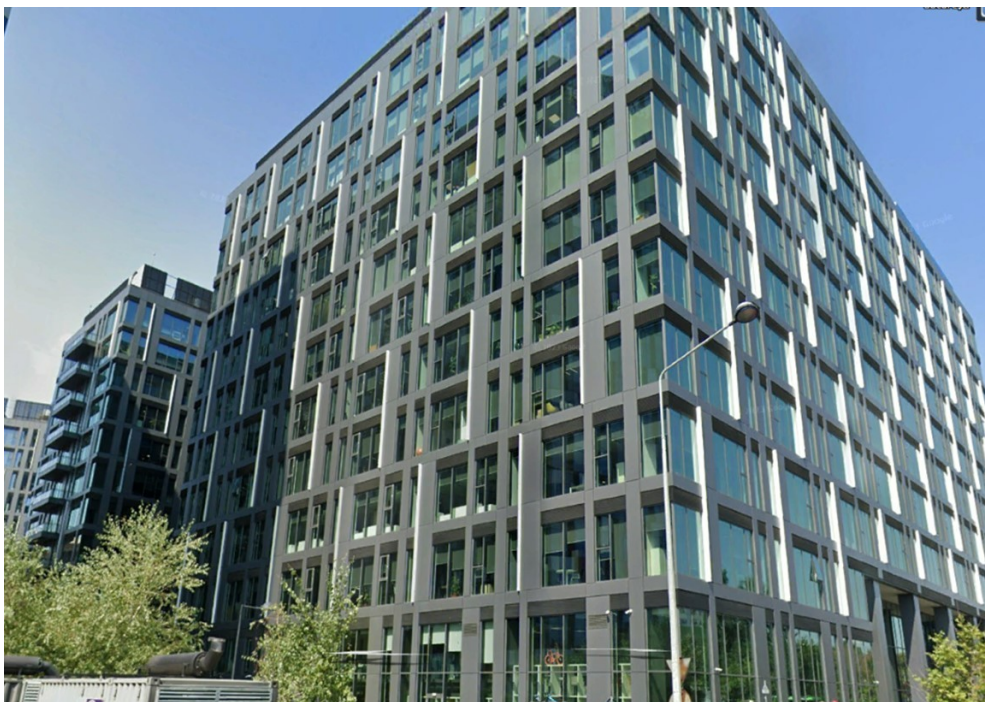


## Grozavesti

### CARACTERISTICI

- ▶ **ZONA:** Grozavesti
- ▶ **Etaj:** Et. 8
- ▶ **Regim de inaltime:** 2S+P+10E



### Desfasurare

#### Cladirea 3:

Etaj 8: 480 sqm

Mentenanata: 3.5 Euro/mp/luna + TVA

### FINISAJE/DOTARI

- ▶ **Alte dotari:** Anti Incendiu, AC, Conexiune Retea Vocea si Internet, Lift, Geamuri Termopan, Faianta, Gresie, Administrare, Garaj

### DESCRIERE

Imobilul de birouri este situat la intersectia a doua artere principale ale orasului: bulevardul Vasile Milea si Splaiul Independentei beneficiind de acces rapid pe Podul Basarab si de statia de metrou Grozavesti.

Facilitati:

- Cladire verde
- Plafon suspendat
- BMS
- Terase
- HVAC 4 tevi
- cablare IT
- lifturi de capacitate si viteza mare
- Mocheta
- sistem de detentie a focului
- locuri parcare 100 Euro + TVA/ loc

16 EUR mp + TVA

0,01 ETHEREUM mp + TVA