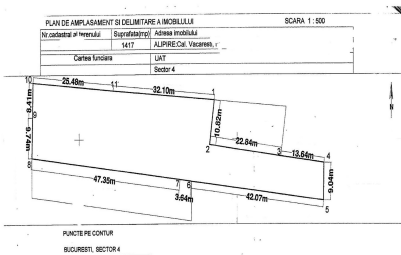
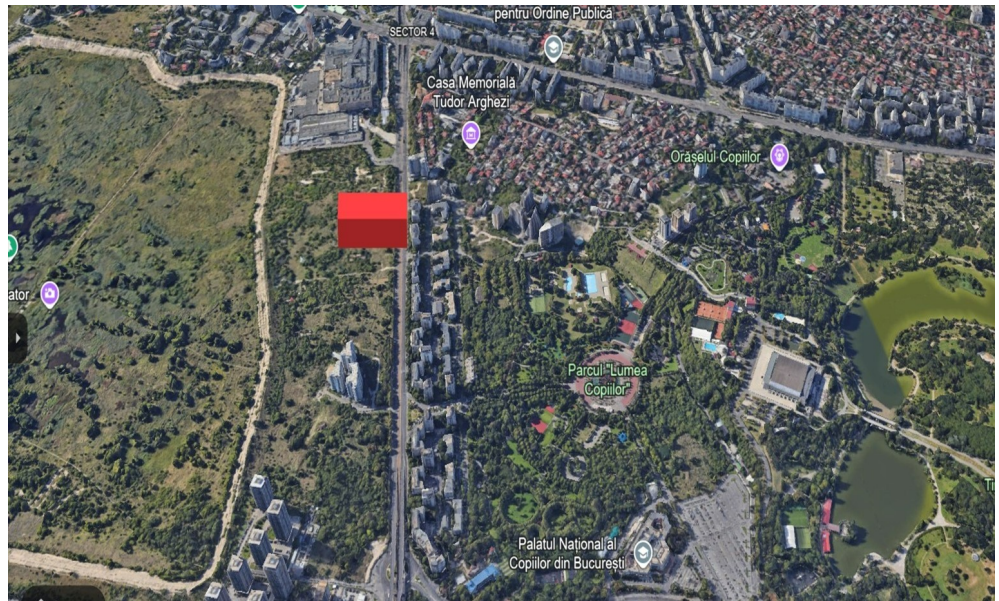


Calea Vacaresti

Land for Sale

CHARACTERISTICS

- ▶ **AREA:** Calea Vacaresti
- ▶ **Land Surface:** 1417 sqm
- ▶ **POT:** 40
- ▶ **CUT:** 4.5
- ▶ **End-use:** Rezidential
- ▶ **No. of openings:** 2



DESCRIPTION

The building is located on Calea Vacaresti, one of the main thoroughfares in Bucharest, which connects the central area with the southern part of the city.

It is close to the Tineretului Park, Delta Vacaresti and Sun Plaza Mall, thus providing easy access to commercial, recreational and public transport facilities.

It has access to all means of transport and it fits between 2 metro stations.

Urbanistic information taken from CU to maintain the same conditions from the old building permit:

POT 40%

CUT 4.5

H max: GF + 14 F

LAND AREA: 1,417 sqm

OPENING: Double 57 m, 19 m

LEGAL SITUATION: The land is owned by a legal entity

1,000 EUR + VAT

0.01 BITCOIN + VAT

0.63 ETHEREUM + VAT