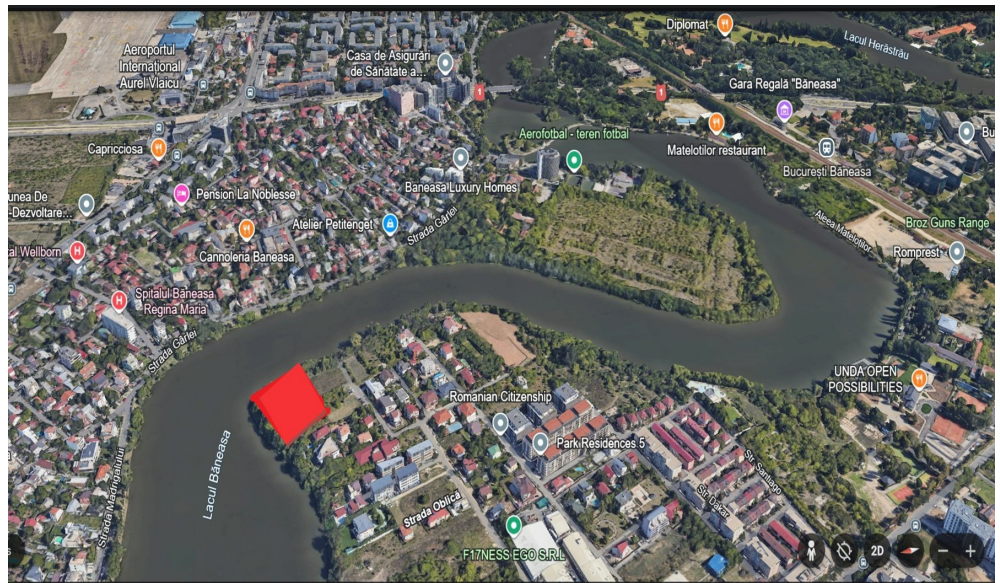


**Baneasa**

**Land for Sale**

**CHARACTERISTICS**

- ▶ **AREA:** Baneasa
- ▶ **Land Surface:** 2000 sqm
- ▶ **POT:** 20%
- ▶ **CUT:** 0,7
- ▶ **End-use:** Rezidential
- ▶ **Opening:** 30 m
- ▶ **No. of openings:** 2



**DESCRIPTION**

The land is located in the northern area of Bucharest, at a short distance from Casa Presei Libere. The property benefits from an excellent location, with quick access to the main areas of interest of the capital, having double opening at Baneasa Lake. This land is the ideal choice for those looking for a haven of tranquility, in a unique natural setting, complemented by a spectacular view over the lake.

- LAND AREA: 2,000 sqm
- OPENING AT THE LAKE ~ on 2 sides
- OPENING STREET ~ 30 m
- INFORMATION URBANISM ACCORDING TO PUG: POT 20%
- CUT 0.7
- H maximum: GF+2F

500 EUR sqm

0.01 BITCOIN sqm

0.19 ETHEREUM sqm