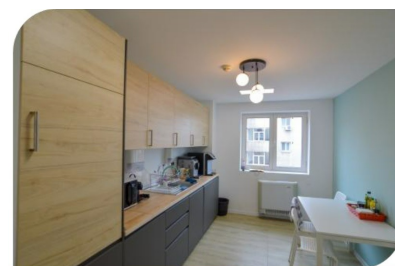
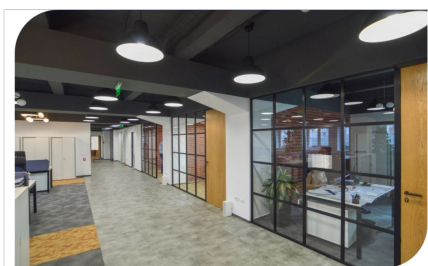


Icoanei Garden

CARACTERISTICS

- ▶ **AREA:** Icoanei Garden
- ▶ **Usable surface:** 427.96 sqm
- ▶ **Parking places:** 2
- ▶ **Floor:** 3
- ▶ **Maximum height:** 2S+P+M+5E+M



Layout

3rd Floor: 427.96 sqm

Maintenance: 3.5 Euro/sqm/month + VAT

Parking plots: 80 Euro/sqm/month + VAT

FINISHES/EQUIPMENT

- ▶ **Others:** AC, Heating System, Internet and Voice Connection , Insulated Windows , Faience, Sandstone, Parquet, Elevator

DESCRIPTION

The office building is situated very close to Magheru Boulevard, at only a few minutes distance from Romana Square, benefiting of a great access to all important point of interest in the city.

Facilities:

- B class office building;
- air conditioning;
- 2 Schindler elevators;
- diesel power generator;
- fire prevention system;
- access control on each floor;
- sanitary groups on each level;
- PC and phone network;
- Storage spaces;

14 EUR sqm + VAT

0.01 ETHEREUM sqm + VAT