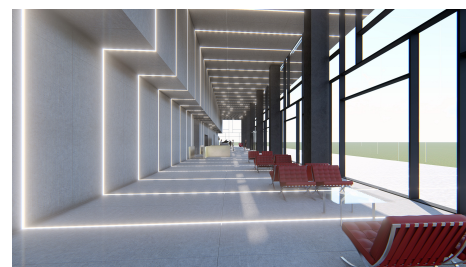
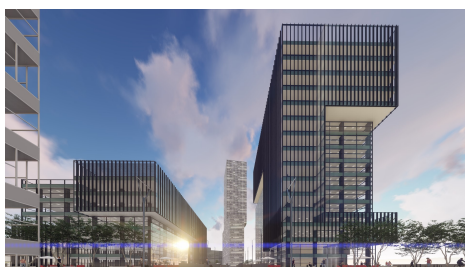


Politehnica

CARACTERISTICS

- ▶ **AREA:** Politehnica
- ▶ **Usable surface:** 21347 sqm
- ▶ **Built surface:** 24556 sqm
- ▶ **Parking places:** 340
- ▶ **Construction year:** 2021
- ▶ **Maximum height:** 2S+P+14E+1E tehnic



Layout

Available area:

1st Floor: 909 sqm

3rd Floor: 1,607 sqm

6th Floor: 1,400 sqm

7th Floor: 1,400 sqm

FINISHES/EQUIPMENT

- ▶ **Others:** Security, Fire Protection, Alarm system, Video Surveillance , AC, Elevator, Heating System, Internet and Voice Connection , TV Cable, Administrare, Garage, Insulated Windows , Sandstone, Faience

DESCRIPTION

The office building offered for rent, situated in the central western side of Bucharest the newest business corner of the city, in the center of an animated young people community nest to very close to Polytechnic University. The building is situated close to many commercial centers, the subway station Petrache Poenaru (former Semanatoarea) is situated inside this business park, the project benefiting of all means of transportation, and of an extremely easy access to all the important point of interest in the city.

Facilities:

A+ class office building;

open space;

false ceiling

Natural light;

BMS;

HVAC;

Smoke/ fire detectors;

Social bar at 15th Floor;

Fire prevention system;

Access control;

Server rooms;
Administration and property management;
Restaurant;
Locker room with showers;
Coffee shop;
Supermarket;
8 high speed elevators;
LED lights;
Parking places;
Bicycle parking;
Loading stations for electric vehicles;
services for maintenance of the green areas;
VRF Mitsubishi Electric ventilation system;
Under authorization for the BREEAM Excellent
Reception;
Opening windows;
Maintenance.
Parking places

14.50 EUR sqm + VAT

0.01 ETHEREUM sqm + VAT