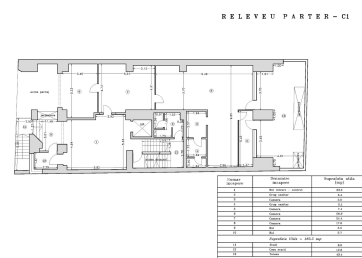


## Charles de Gaulle Square

## Offices for Rent

### CARACTERISTICS

- ▶ **AREA:** Charles de Gaulle Square
- ▶ **Usable surface:** 166 sqm
- ▶ **Floor:** P
- ▶ **Maximum height:** D+P+5E



### Layout

#### Available areas:

Ground floor: 166 sqm (included the terrace of 43 sqm)

The cost for maintenance will be added.

### FINISHES/EQUIPMENT

- ▶ **Others:** AC, Elevator, Heating System, Internet and Voice Connection , Sandstone, Faience, Insulated Windows

### DESCRIPTION

The building is situated close to Aviatorilor Boulevard, Kiseleff Street and Arcul de Triumf.

#### Facilities:

- own central heating;
- elevator;
- arranged sanitary groups;
- own terrace;
- false ceiling;
  
- air conditioning;

- 1 parking place/level.

2,300 EUR

0.02 BITCOIN

0.87 ETHEREUM

REGATTA® - Leader of Romanian Real Estate Brands  
Phone: 021.232.90.12, 021.232.90.88 /// E-mail: office@regatta.ro

\*Receiving this presentation represents your agreement that any negotiation regarding this property to take place through the agency of a Regatta rep