

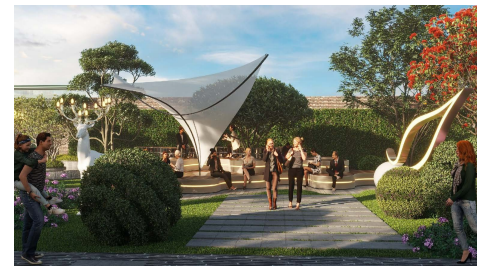
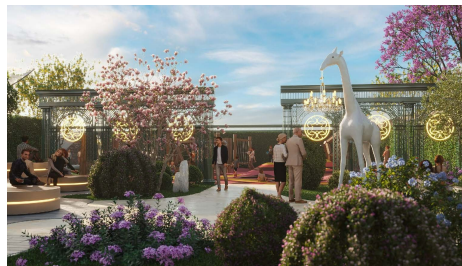
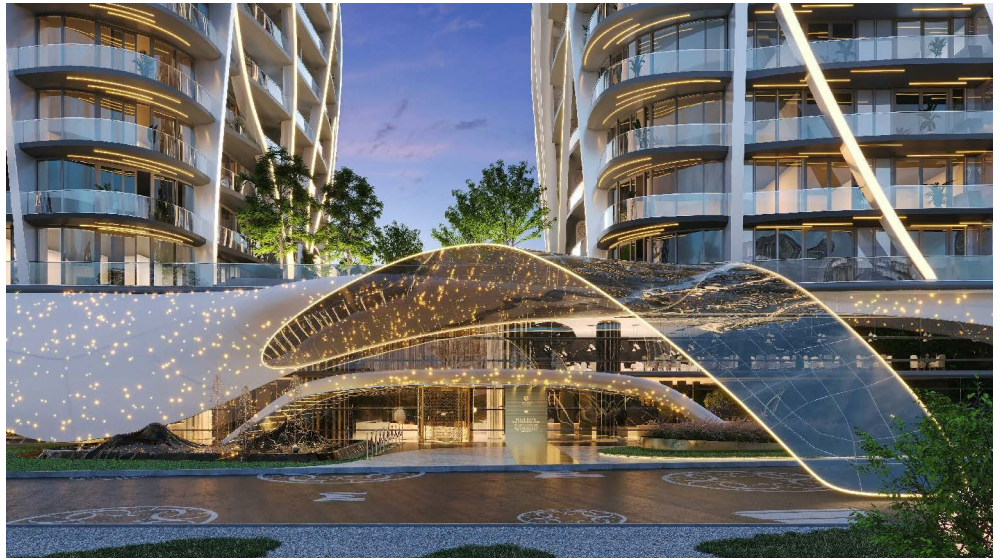
Herastrau

Apartment for Sale

3 rooms

CARACTERISTICS

- ▶ **AREA:** Herastrau
- ▶ **Usable surface:** 126.9 sqm
- ▶ **Built surface:** 139 sqm
- ▶ **No. of Bedrooms:** 2
- ▶ **No. of Rooms:** 3
- ▶ **No. of Bathrooms:** 2
- ▶ **Parking places:** 1
- ▶ **Floor:** 2
- ▶ **Construction year:** 2025
- ▶ **No. of Balconies:** 1



DESCRIPTION

We introduce you one extraordinary architectural marvels nestled in the heart of the city, created in collaboration with the renowned fashion brand Elie Saab the epitome of sophistication and elegance.

Introducing "Elie Saab Towers," an unrivaled residential experience that exudes style, refinement, and uncompromising quality. These exquisite towers stand tall as testaments to the fusion of architectural brilliance and haute couture, elevating the standards of luxury living in Bucharest.

From the moment you step foot into the grand lobby, you will be enveloped in an ambiance of timeless elegance. Every detail has been meticulously crafted to create an atmosphere that reflects the grace and sophistication synonymous with the Elie Saab brand. The design harmoniously blends contemporary aesthetics with classic influences, resulting in a seamless union of modern luxury and timeless allure. Created in collaboration with the world-renowned fashion designer Elie Saab, the towers offer a unique architectural style, featuring sleek lines, expansive glass windows, and elegant finishes. The interiors are spacious, open, and filled with natural light, creating a serene and inviting atmosphere that is perfect for relaxation and entertainment.

Among the area's highlights, there are the Herastrau Lake, King Michael I Park, and Ramada Hotel, plus many elite restaurants on the main road and on the lake.

The quick access to the international schools and commercial office centers in Pipera is also an asset. Modern beauty salons, fitness clubs and gyms are available in close proximity.

Close to everything that matters:

- ?2 minutes to Herastrau Park
- ?5 minutes to Metro Station
- ?10 minutes to Otopeni Airport
- ?5 minutes to Promenada Mall

The two towers include 141 units, comprising 1, 2 and 3-bedroom apartments. A premium experience, including:

- ?Concierge services
- ?State-of-the-art spa
- ?Modern fitness room
- ?Lounge bar in the common area
- ?Fine-dining restaurant, featuring a Michelin-starred chef

?24/7 front desk support

?Valet parking service

?Children's playground, indoor and outdoor

?Maximum privacy and security

Parking slots enhance convenience and accessibility within our residential complex.

Parking slots are available for purchase, at the following prices: Floor -1: 40.000 eur + VAT / parking slot

Floor -2: 35.000 eur + VAT / parking slot

Please note that specific terms and conditions may apply for apartments and parking slots pricing, and discounts are subject to change based on individual circumstances and negotiations.

Project delivery date: end of 2025

445,000 EUR + VAT

4.81 BITCOIN + VAT

168.01 ETHEREUM + VAT