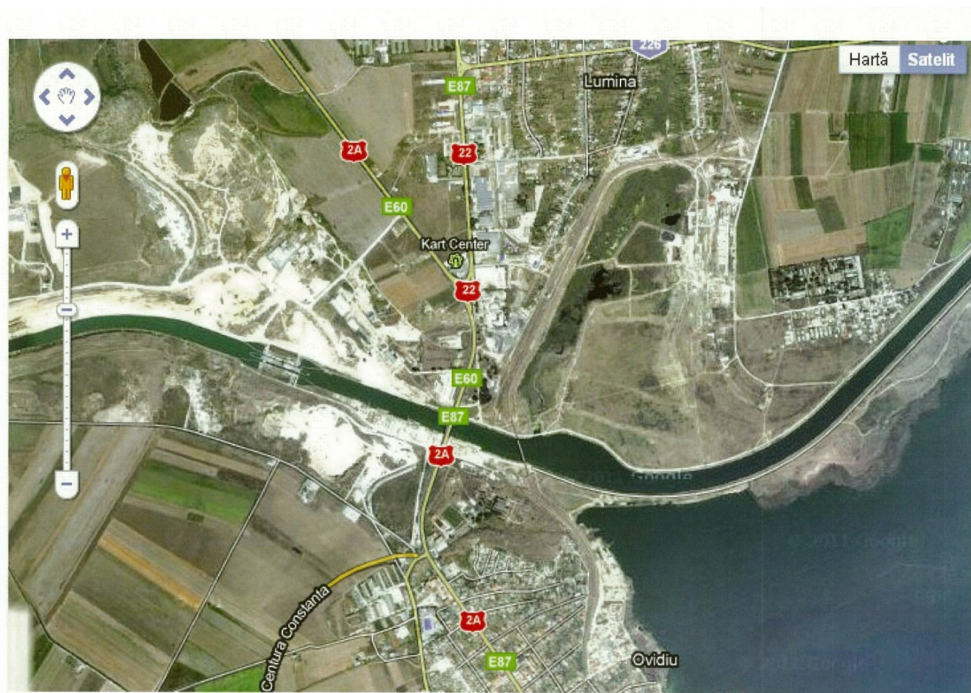


## Ovidiu

### CARACTERISTICS

- ▶ **AREA:** Ovidiu
- ▶ **Land Surface:** 341000 sqm



### DESCRIPTION

The property is situated in NE of Ovidiu City and it has 35 Ha area. Under the plan the situation the Electric Central is bordered to the East Siutghiol Lake and Dunarea—Marea Neagra Chanel (Poarta Alba—Ovidiu—Navodari ramification) and on North European Road E15. The objective in cause can be equipped with installation for producing electric energy with installed capacity of 350MW, all necessary conditions for this exist such as:

- downloading at the national energy system;
- the stadium is 200 meters from the asset (from discussion we have with representatives CONGAZ and ROMGAZ we conclude they can deliver the required flow for the functioning of a plant an amount of 350MWh);

SURFACE: 341.000 sqm (34,1 hectares)

#### CATEGORIES:

- Agricultural, urban (PUG), without PUZ (Town Planning) in Ovidiu City;
- Unincorporated, unproductive area in Lumina Commune.