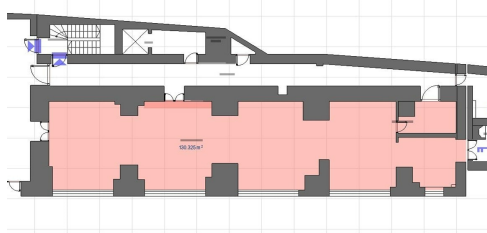


Calea Victoriei

Commercial Spaces for Rent

CHARACTERISTICS

- ▶ **AREA:** Calea Victoriei
- ▶ **Usable surface:** 488 sqm
- ▶ **Floor:** S+P



DESCRIPTION

The space is located downtown in the Calea Victoriei area.

Total usable area: 488 sqm

Ground floor usable area: 235 sqm

Usable area of the basement: 165 sqm

Terrace: 88 sqm

The space is arranged on the ground floor and basement.

Facilities:

The space is perfectly suitable for restaurant/horeca activity.

In the basement is the space intended for the kitchen;

Generous terrace;

The space requires arrangement.

11,000 EUR + VAT

0.12 BITCOIN + VAT

3.42 ETHEREUM + VAT