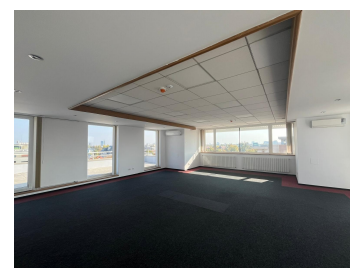


Aviatorilor

CARACTERISTICS

- ▶ **AREA:** Aviatorilor
- ▶ **Usable surface:** 510 sqm
- ▶ **Floor:** 4, 5
- ▶ **Maximum height:** D+P+5E



FINISHES/EQUIPMENT

- ▶ **Others:** AC, Faience, Insulated Windows , Sandstone, Parquet, Heating System

DESCRIPTION

The building is located in the immediate vicinity of Charles de Gaulles Square, several important institutions, including banking centers, museums, hospitals and the metro station and Herastrau Park.

Facilities:

Reception;

Brand new central heating;

Elevator;

False ceiling;

Network voice/data

Parking lot in semi-basement: 100 euro/place + VAT

Floor 4 380 sqm + 61 sqm terrace

Floor 5 130 sqm + 266 sqm terrace

Terrace 266 sqm: 3 Euro/sqm/month + VAT

Maintenance: 3 Euro/sqm/month + VAT

18 EUR sqm

0.01 ETHEREUM sqm