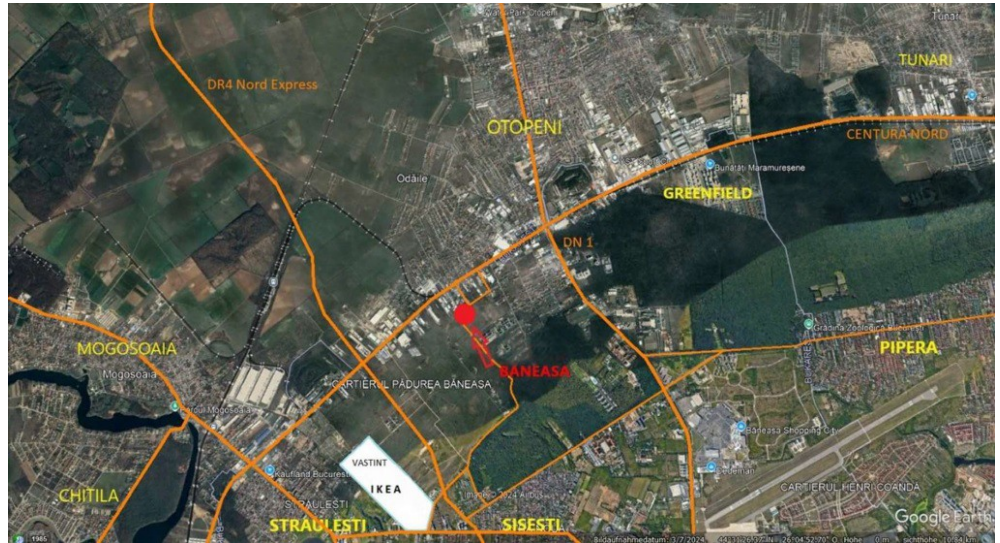


Baneasa

CARACTERISTICS

- ▶ **AREA:** Baneasa
- ▶ **Land Surface:** 12000 sqm



FINISHES/EQUIPMENT

- ▶ **Others:** AC, Heating System, Insulated Windows, Faience, Sandstone, Parquet

DESCRIPTION

The new and modern educational complex offered for sale has as main catchment area: Otopeni, Greenfield, Tunari, Pipera, Baneasa, Sisesti, Straulesti, Bucurestii Noi, Mogosoaia and Chitila.

The campus consists of 4 main areas:

1. Kindergarten, on a plot of 3600 sqm for a number of up to 1,000 children, consisting of 7 rooms for groups of 10-15 children.
2. Primary school on a plot of 5,400 sqm for up to 300 children with their own parking places and access from 2 main streets.
Total built area of the school building: 1,270 sqm (1,150 sqm net usable area).

Outdoor land and parking spaces.

In the first phase, there will be:

11 Classrooms;

2 laboratories;

1 music room

a large canteen (180 children)

In the second phase there will be:

an additional level and 7 classrooms (126 children)

3. Gym (375 sqm) with dressing rooms, toilets and a staff room on a plot of 1,100 sqm.

4. Existing land for a possible future construction of a high school: 1,900 sqm. This area is currently used as an additional parking lot
It is built on a plot of 12,000 sqm in the northern area of Sector 1 in Bucharest with direct access on the north side through the North Belt and through a secondary street (Sisesti direction) on the south side.

7,600,000 EUR + VAT

109.20 BITCOIN + VAT

2,875.49 ETHEREUM + VAT