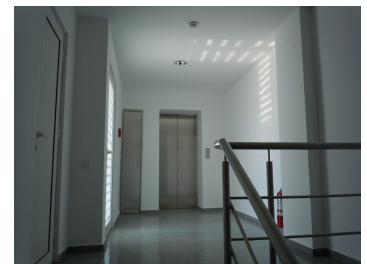


Ring Road

CARACTERISTICS

- ▶ **AREA:** Ring Road
- ▶ **Land Surface:** 24889 sqm
- ▶ **Parking places:** Da
- ▶ **Construction year:** 2007



Layout

BUILDINGS (warehouse and office buildings):

Land plot: 24.889 sqm

C1- OFFICE BUILDING:
B+GF+4F+Technical floor

Unfolded area: 2,596 sqm

C2- OFFICE BUILDING: B+GF+2F-3R

Unfolded area: 1,355 sqm

C3 – INDUSTRIAL SPACES – Ground floor

Unfolded area: 5.099 sqm

C4 – INDUSTRIAL SPACES – GF + 1F
(partially)

Unfolded area: 8,269 sqm

Industrial spaces: 7,249 sqm

FINISHES/EQUIPMENT

► **Others:** Parking, Video Surveillance , Alarm system, Fire Protection, Heating System, AC, Internet and Voice Connection

DESCRIPTION

The building is located in the Northern side of Bucharest having an easy access from DN1A and also from Odai Street and, as a public mean of transportation it is available 460 bus line.

DESCRIPTION- CHARACTERISTICS- WAREHOUSES:

structure and insulating concrete elements with drywall partitioning;
metallic structure with exterior closures from panels of shaped sheet and with expanded polyurethane insulating core;
9 m warehouse's height;
optional shelves system
skylights provided with against-fire hatches;
electric sectional doors 3.50 x 4m;
loading/unloading ramps;
pedestrian access doors;
heating system;
industrial floor with quartz;
heavy trucks access.

DESCRIPTION- CHARACTERISTICS- OFFICES:

A Class Office building
Reception;
Elevator;
Large spaces with natural light;
Fire prevention system with smoke detectors and hydrants system;
Pedestrian access door;
Heating system;
Parking places;
Video surveillance;
Alarm system;
Fire prevention system;
Own central heating;
Air conditioning;
PC and phone network;

12,500,000 EUR + VAT

134.56 BITCOIN + VAT

3,892.72 ETHEREUM + VAT