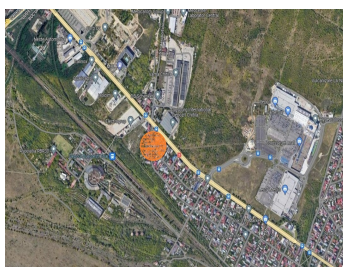


Soseaua Chitilei

Industrial Spaces for Sale

**CARACTERISTICS**

- ▶ **AREA:** Soseaua Chitilei
- ▶ **Usable surface:** 450 sqm
- ▶ **Land Surface:** 990 sqm



**DESCRIPTION**

The land offered for sale is located on Chitilei Road near the Colosseum Mall, Chitila Custom and numerous other residential developments.

The area is in a boom in terms of real estate developments in recent years.

Warehouse of ~ 450 sqm is masonry with a height of ~ 5 m and is in perfect condition.

It is used for storage and partly has a sub-slope area used for offices.

The warehouse has all the utilities, 2 central heating, toilets.

The access is double: a main access from Chitilei Road and the secondary one from an adjacent street.

Land area: 990 sqm

Utilities: All utilities

Warehouse: 450 sqm

500,000 EUR + VAT

7.93 BITCOIN + VAT

215.62 ETHEREUM + VAT