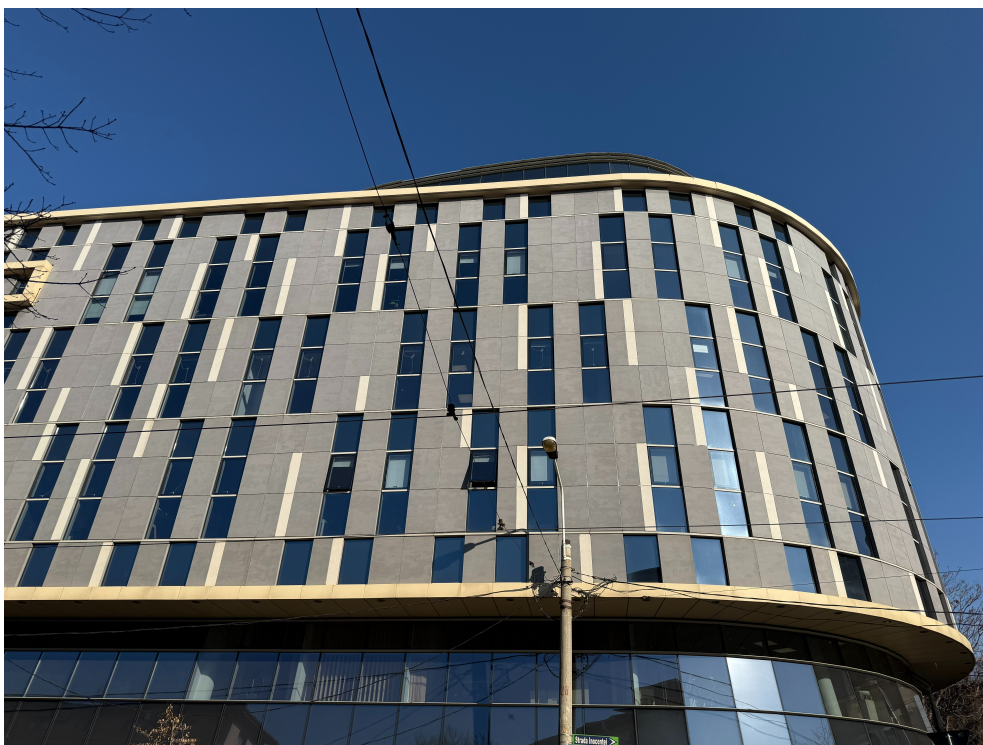


Carol I Blvd

Offices for Rent

CARACTERISTICS

- ▶ **AREA:** Carol I Blvd
- ▶ **Usable surface:** 3600 sqm
- ▶ **Parking places:** Da
- ▶ **Floor:** 6
- ▶ **Maximum height:** 2S+P+7E
- ▶ **Subdivision:** open space



Layout

Available areas:

6th Floor: 310 sqm

Maintenance: 4.2 €/ sqm/month+ VAT

DESCRIPTION

The building is situated very close to Carol Boulevard and at few minutes away from Rosetti Square and Universitatii Square.

Facilities:

A class office building;

- divided and fully arranged;

- beautiful view;
- central heating;

- air conditioning;

14.50 EUR sqm + VAT

0.01 ETHEREUM sqm + VAT