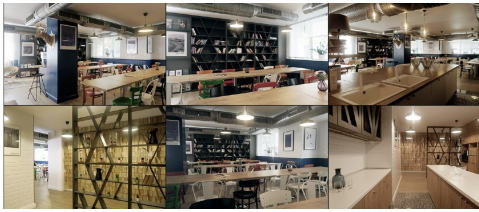


Calea Victoriei

CARACTERISTICS

- ▶ **AREA:** Calea Victoriei
- ▶ **Usable surface:** 2283 sqm
- ▶ **Built surface:** 3297 sqm
- ▶ **Parking places:** 15
- ▶ **Maximum height:** S+P+6E



Layout

Available areas:

Built area: 3,297 sqm

Rental area: 2,283 sqm

Terraces: 285 sqm

12 parking places in the underground

3 parking places outside;

35,000 Euro / month + VAT

3.5 Euro/sqm/month + VAT

120 Euro/ place/month + VAT

DESCRIPTION

The building is located near Calea Victoriei and Romana Square, benefiting from easy access to all means of public transport. Also in the immediate vicinity are the Hilton Hotel, Golden Tulip and Novotel.

Description:

Ground floor - 347.25 sqm - entrance, reception, hallways, 2 bathrooms, conference rooms, cafeteria, elevator, staircase.
Floor 1 – 334,35 sqm – offices, 2 bathrooms, conference rooms, elevator, staircase and 2 balconies-15,26 sqm;
Floor 2 - 333,73 sqm – offices, conference rooms, 3 toilets, private rooms, elevator, staircase and 2 balconies – 15,26 sqm;
Floor 3 – 334,42 sqm – offices, conference rooms, 2 toilets, private rooms, elevator, staircase, 2 balconies – 15,26 sqm;
Floor 4 – 260,63 sqm – offices, conference rooms, 2 toilets, private rooms, elevator, staircase, staircase;
Floor 5 – 262,22 sqm – offices, conference rooms, 2 toilets, private rooms, elevator, staircase, balcony – 10,34 sqm;
Floor 6 – 124,75 sqm – offices, 1 toilet, staircase, elevator, terrace of 144,68 sqm.