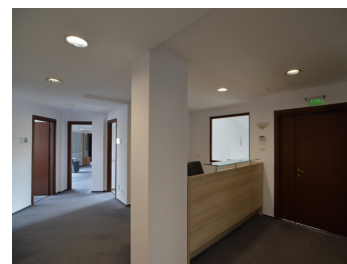
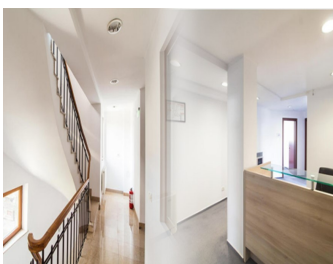
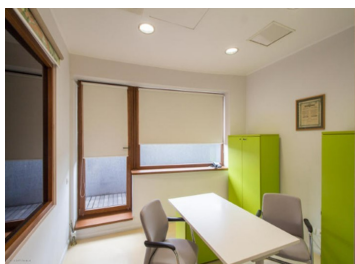


Icoanei Garden

CARACTERISTICS

- ▶ **AREA:** Icoanei Garden
- ▶ **Usable surface:** 307 sqm
- ▶ **Parking places:** 1
- ▶ **Floor:** 2
- ▶ **Maximum height:** S+P+6ER



DESCRIPTION

The office building in which is located in the Gradina Icoanei area a few minutes from Magheru Boulevard and the Universitate metro station.

Facilities:

- modern arrangements
- centralized heating/cooling system
- internet-phone network
- security, reception, conference room on the 6th floor
- kitchen
- 1 parking place included in the price

Floor 2: 307 sqm

12.50 EUR sqm + VAT

0.01 ETHEREUM sqm + VAT