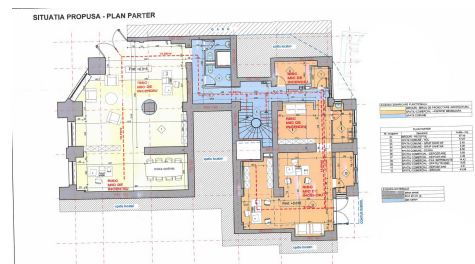
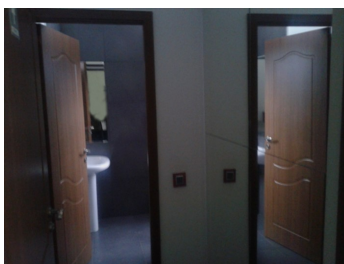


Unirii

Commercial Spaces for Rent

### CARACTERISTICS

- ▶ **AREA:** Unirii
- ▶ **Usable surface:** 570 sqm
- ▶ **Maximum height:** S+P+M



### DESCRIPTION

The commercial space is situated on Unirii Boulevard benefiting of a great pedestrian and car traffic.

Facilities:

- arranged;
- good pedestrian and car traffic;
- 2 entrances front one and rear one;
- own central heating;

Surfaces:

Total usable area: 570 sqm  
Basement: 96 sqm  
Ground Floor: 205 sqm  
Mezzanine: 269 sqm

10,000 EUR + VAT

0.11 BITCOIN + VAT

3.07 ETHEREUM + VAT