

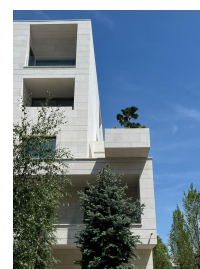
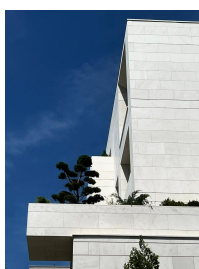
Dorobanti-Capitale

Apartment for Rent

3 rooms

**CARACTERISTICS**

- ▶ **AREA:** Dorobanti-Capitale
- ▶ **Usable surface:** 172.26 sqm
- ▶ **Built surface:** 215.08 sqm
- ▶ **No. of Bedrooms:** 2
- ▶ **No. of Rooms:** 3
- ▶ **No. of Bathrooms:** 3
- ▶ **Parking places:** 2
- ▶ **Construction year:** 2024



## Layout

Beautiful and elegant apartment divided in:

- 1 living room + dining room;
- 1 office room;
- 1 kitchen,
- 2 bedrooms;
- 3 bathrooms;
- walk-in dressing rooms;
- 1 terrace: 19 sqm;
- underground parking places.

## FINISHES/EQUIPMENT

► **Furniture:** Can be Furnished

► **Others:** AC, Heating System, Storage rooms, Sandstone, Parquet, Garage, Insulated Windows , Faience

---

## DESCRIPTION

Located in one of the most exquisite area in Bucharest, Dorobanti – Capitale, in a brand new luxury building, these apartments represent the most impressive, elegant residence in Romania, and offer to its tenants the best way of living.

Very close there are embassies, Government Palace, public institutions, museums, hospital, green areas, high schools and schools, cozy restaurants and coffee shops, elegant and chic residential villas.

The building has an amazing entrance with reception.

The access to the property is very easy from any important point in Bucharest.

On the ground floor, we find an entrance and a beautiful reception area with hallway that leads to the elevator and staircases.

All the interiors have been studied in detail, using quality materials and finishes with great attention to the exterior visible from all areas of the apartment thanks to large windows.

### Amenities and finishes:

- large and bright rooms;
- elegant dining area;
- floor to ceiling windows;
- furnished walk-in dressings;
- fully furnished and equipped kitchen and bathrooms;
- state-of-the-art appliances;
- great quality of materials;
- VRF air conditioning system;
- smart home system with KNX protocol;
- aluminum windows Schuco Panorama Design with double glazing tripan;
- charging station for e-cars;
- large terraces;
- parking places and storage rooms in the underground;