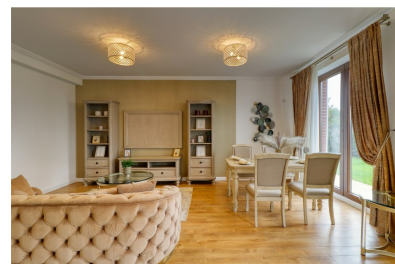


Tunari

CARACTERISTICS

- ▶ **AREA:** Tunari
- ▶ **Parking places:** 25
- ▶ **Construction year:** 2023
- ▶ **Maximum height:** P+1



DESCRIPTION

The residential complex where these beautiful buildings are located is in Tunari, and preserves the fascinating nuances of the past, being also a modern and refined residential ensemble, in Brancoveanu architectural style. Free spaces, structured by columns such as the access portico, blur the massiveness of architectural forms.

The porch is a representative element of this architectural style, and the upstairs proportions are slender and harmonized.

Each house has generous upstairs terraces and attic, ideal for storage, playground or for arranging a workshop/office.

The residential complex has 11 units (P+1), with surfaces up to 130 sqm.

The houses benefit from:

3 bedrooms;

3 bathrooms;

kitchen;

living-room;

cellar

attic

two parking spaces.

Each house has its own courtyard, up to 250 sqm.

One of the villas has an extra studio at the ground floor.

The villas have generous gardens and a large courtyard, where children can play safely, access is secured.

The location of Tunari is chosen so that you have near your home everything you find in the city:

The park is glued to the complex, which gives added value to those who live here.

park and playground

recreation area;

promenade area;

supermarkets;

pharmacy;

school and kindergarten near the complex;

all means of public transport.