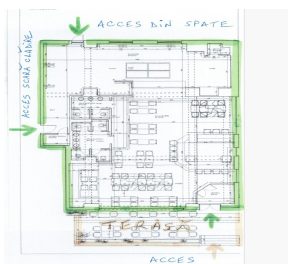


Floreasca

Commercial Spaces for Rent

CHARACTERISTICS

- ▶ **AREA:** Floreasca
- ▶ **Usable surface:** 260 sqm
- ▶ **Floor:** P
- ▶ **Construction year:** 2005
- ▶ **Maximum height:** P+9E



Layout

Ground floor: 260 sqm the space + 54 sqm terrace.

DESCRIPTION

The office space is situated in Northern side of Bucharest on Calea Floreasca, at only a few minutes distance from Dorobanti Square and Primaverii neighborhood.

Facilities:

- own central heating;
- air conditioning York;
- false ceiling;
- parking plot outside and inside;
- security and reception;

Rental prices:

- 6,500 €/month + VAT large areas;
- 775 €/month + VAT maintenance;

6,500 EUR + VAT

0.07 BITCOIN + VAT

1.91 ETHEREUM + VAT