

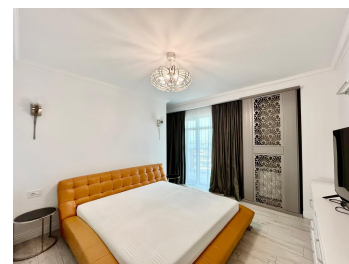
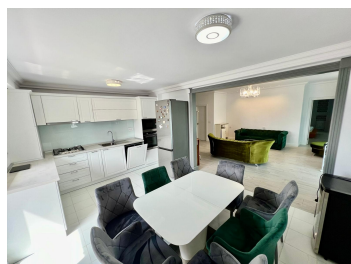
Baneasa

Apartment for Rent

2 rooms

CARACTERISTICS

- ▶ **AREA:** Baneasa
- ▶ **Usable surface:** 122 sqm
- ▶ **No. of Bedrooms:** 1
- ▶ **No. of Rooms:** 2
- ▶ **No. of Bathrooms:** 2
- ▶ **Parking places:** 1
- ▶ **Floor:** 10
- ▶ **Construction year:** 2009
- ▶ **Maximum height:** S+P+11E
- ▶ **Balconies :** 2



DESCRIPTION

The apartment is located on the tenth floor of a building from 2009, near Baneasa Park, Baneasa airport, with access to shopping centers and other points of interest.

If you are looking for a 2-room apartment with a good location, we invite you to visit this property located in the Baneasa area, Ficusului. This apartment is modern, with a total usable area of 122 sqm, fully furnished and equipped.

The rooms are bright, with parquet floors and double glazing, and the terraces are generous, of 31 sqm and 8 sqm.

The apartment benefits from its own central heating, washing machine with dryer and air conditioning. Benefits from an above ground parking space.

1,200 EUR + VAT

0.02 BITCOIN + VAT

0.69 ETHEREUM + VAT