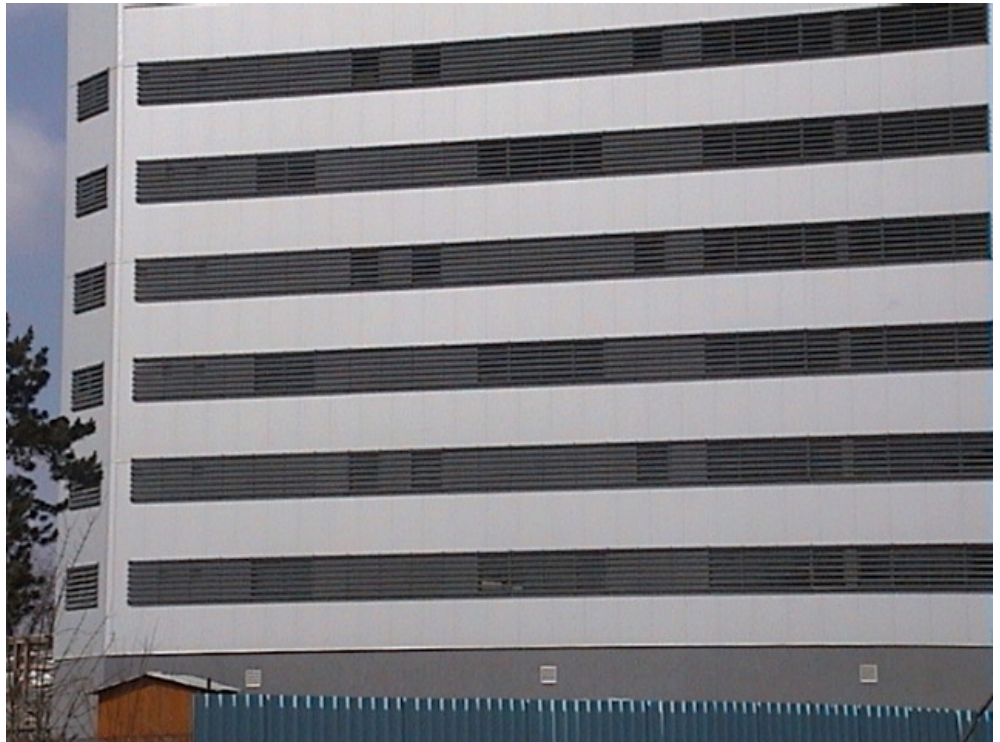


Baneasa

Offices for Rent

CARACTERISTICS

- ▶ **AREA:** Baneasa
- ▶ **Usable surface:** 376 sqm
- ▶ **Floor:** Et. 2; Et. 6;
- ▶ **Construction year:** 2003
- ▶ **Maximum height:** P+7E
- ▶ **Subdivision:** open space



DESCRIPTION

The building is situated in the northern area of Bucharest, close to Herastrau Park and Antena 1.

Facilities:

- open-space + sanitary group / level
- modern elevator
- carpet, faience, grit stone
- own heating
- air conditioning
- conference room

- security, reception

- 2003 building

11 EUR sqm + VAT

0.01 ETHEREUM sqm + VAT