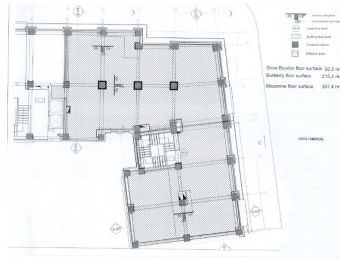
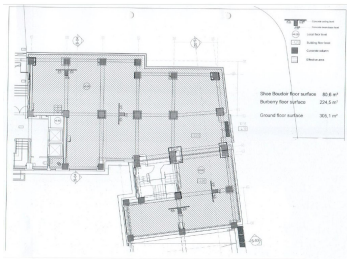


Calea Victoriei

Commercial Spaces for Rent

CARACTERISTICS

- ▶ **AREA:** Calea Victoriei
- ▶ **Usable surface:** 652 sqm
- ▶ **Floor:** P+M



Layout

Total usable area: 652 sqm

Ground floor usable area: 305.1 sqm

Usable mezzanine area: 347.4 sqm

DESCRIPTION

The space is located downtown in Calea Victoriei area.
The space is arranged on the ground floor and mezzanine with interior staircase.

Facilities:

- generous 2-sided showcase;
- arranged;
- excluded public food;
- perfectly suitable store luxury items, medical clinic, etc;