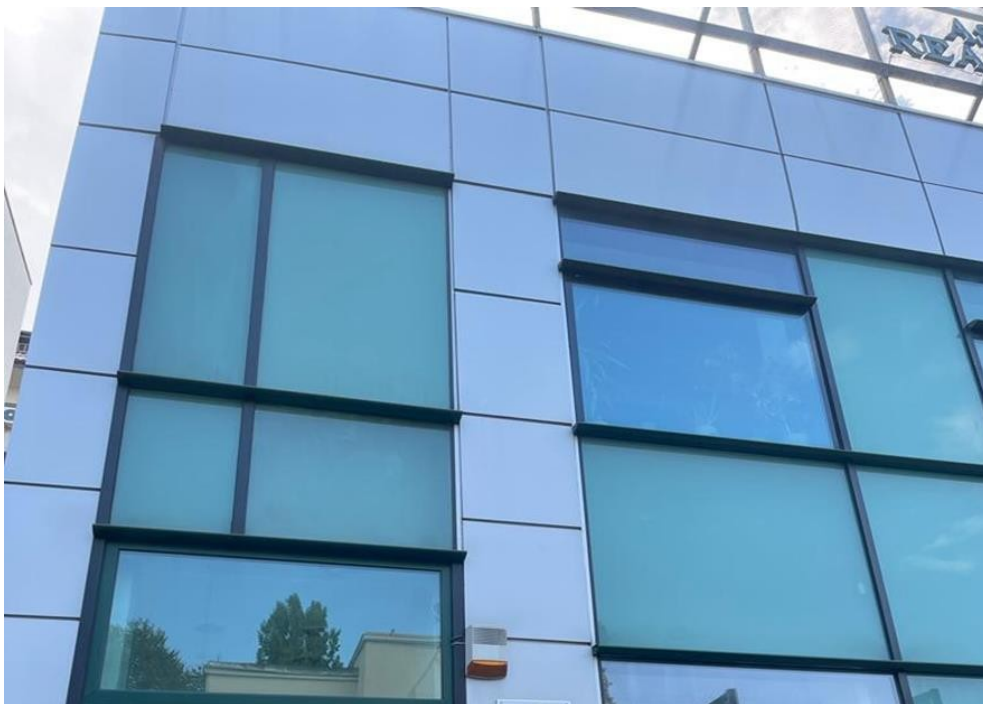


Calea Dorobantilor

CARACTERISTICS

- ▶ **AREA:** Calea Dorobantilor
- ▶ **Built surface:** 350 sqm
- ▶ **Land Surface:** 291 sqm
- ▶ **Maximum height:** S+P+E+M



DESCRIPTION

The office building is situated at only a few minutes distance from Calea Dorobanti and Dorobanti Square.

Semi-basement: 2 storage spaces;

Ground floor: 5 rooms + bathroom;

1st Floor: open spaces + bathroom + terraces;

Attic: 3 rooms;

6,000 EUR + VAT

0.06 BITCOIN + VAT

1.85 ETHEREUM + VAT