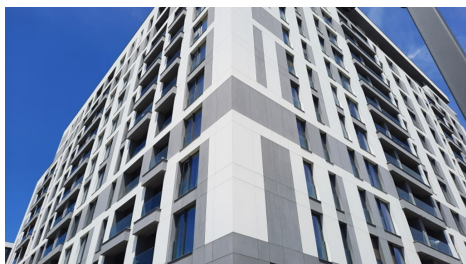


Pipera

Commercial Spaces for Rent

### CARACTERISTICS

- ▶ **AREA:** Pipera
- ▶ **Usable surface:** 295.79 sqm



### DESCRIPTION

The spaces are located at the mezzanine of a building in a residential complex, built in 2022, near the Aurel Vlaicu metro and the Bucharest Police.

Facilities:

- the space is open space type;
- ISU authorization;
- all utilities at the entrance to space;
- above ground parking plots for a fee;
- The space may have both commercial destination and offices;

Available immediately.

25 EUR sqm + VAT

0.01 ETHEREUM sqm + VAT