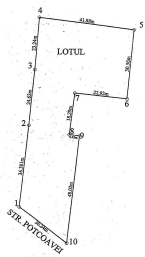
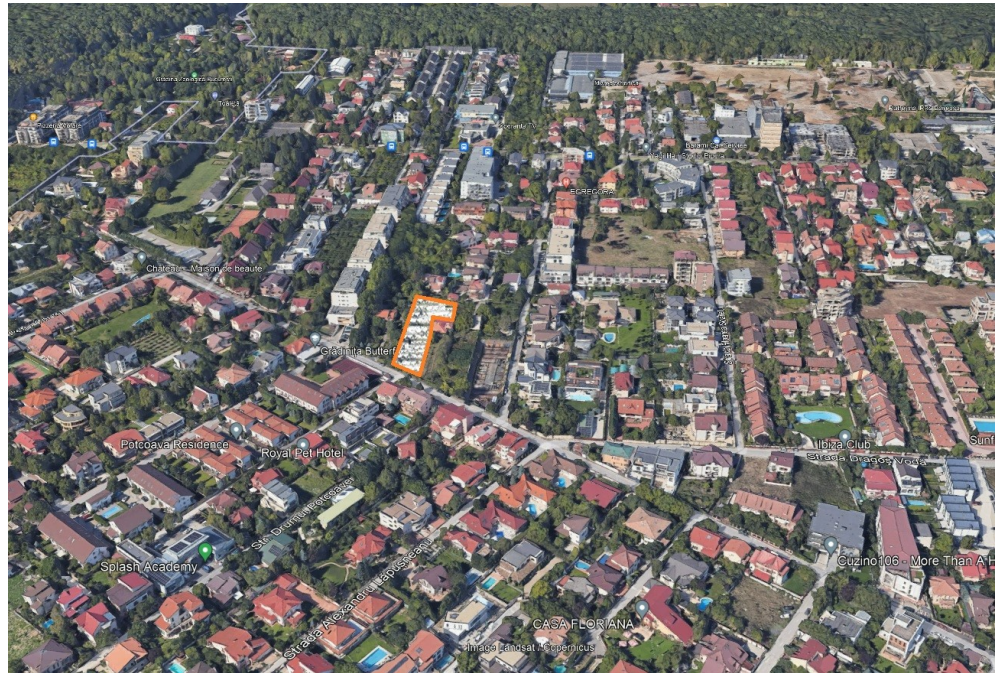


Iancu Nicolae

Land for Sale

CARACTERISTICS

- ▶ **AREA:** Iancu Nicolae
- ▶ **Usable surface:** 4162 sqm
- ▶ **Land Surface:** 2553 sqm
- ▶ **POT:** 40%
- ▶ **CUT:** 2.2
- ▶ **End-use:** Rezidential



DESCRIPTION

Land plot offered for sale is situated in Iancu Nicolae area, one of the most developed area both residential and commercial. In the immediate vicinity there is Baneasa Shopping City, American Embassy and one of the most well known privat schools in Romania.

Surface: 2,553 sqm

Frontage: 26 m

Utilities: all utilities

H max: GF+2F+3R

Legal situation: Land plot owned by an individual.

490 EUR sqm

0.01 BITCOIN sqm

0.15 ETHEREUM sqm