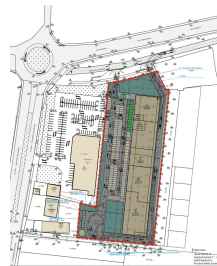


Calafat

CARACTERISTICS

- ▶ **AREA:** Calafat
- ▶ **Usable surface:** 4982 sqm
- ▶ **Built surface:** 5165 sqm
- ▶ **Land Surface:** 15804 sqm
- ▶ **Parking places:** 132
- ▶ **Construction year:** 2023



DESCRIPTION

The retail park in Calafat was built and opened in 2023.

It is built as a single-storey reinforced concrete structure faced with facade panels and with glazed front facade. Entrances to the commercial units are made via automatic doors from a shared parking lot in front of the building. The retail park is linked to the existing Lidl supermarket, which is linked by public transport to the main road.

Rentable area (GLA): 4.987 sqm

Area of the plot: 15.804 sqm

(Total built-up area is 5.165 sqm)

Parking lots: 132

Opening: 08 / 2023

Tenants:

Several Anchor Tenants:(JYSK, KIK, SINSAY, TEDi, C&A)

Occupancy 100% since opening

Retail Park is leased to a balanced tenant mix. Individual tenants are complementary and do not compete with each other, so the whole project is functional long term.

The goods offer is also complemented with a modern LIDL supermarket situated right next to the object.