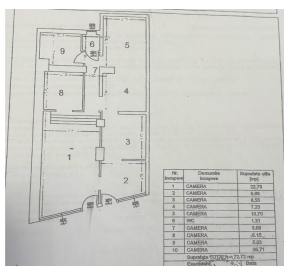
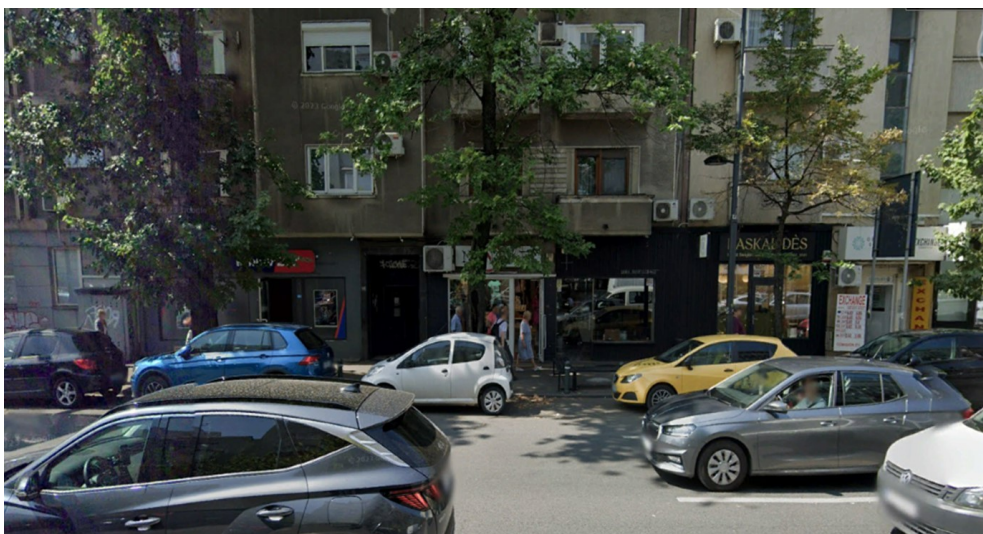


Calea Dorobantilor

Commercial Spaces

CHARACTERISTICS

- ▶ **AREA:** Calea Dorobantilor
- ▶ **Usable surface:** 73 sqm
- ▶ **Floor:** P
- ▶ **Construction year:** 1950



DESCRIPTION

The space is located on Calea Dorobantilor in a 1950 building block benefiting from visibility, car and pedestrian traffic.

Facilities:

Generous showcase;

Own central heating;

The space is rented until March 2029.

400,000 EUR

4.34 BITCOIN

125.41 ETHEREUM