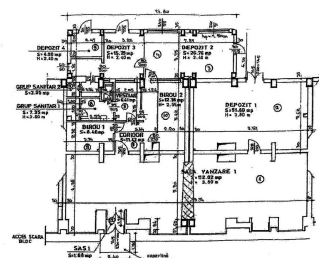


Calea Serban Voda

Commercial Spaces

CARACTERISTICS

- ▶ **AREA:** Calea Serban Voda
- ▶ **Usable surface:** 260 sqm
- ▶ **Land Surface:** cota indiviza 39.38 mp sqm
- ▶ **Construction year:** 1983
- ▶ **Showcase:** 20



DESCRIPTION

The commercial space is situated on the ground floor of a residential building built in 1983 in Tineretului area, very close to Gheorghe Sincai College.

The space is arranged.

The usable area is: 260 sqm
frontage 20 m

2 access doors in front of the building

2 access doors in the back side of the building

The commercial space is rented since 2018 to a company with a valid contract until 2034.

586,000 EUR + VAT

6.27 BITCOIN + VAT

183.58 ETHEREUM + VAT