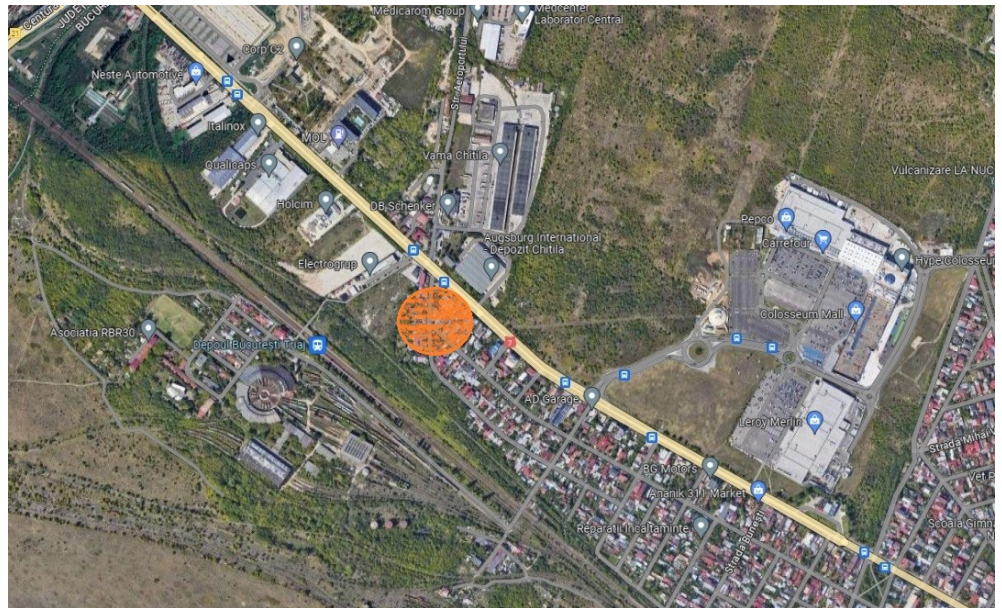


Soseaua Chitilei

Land for Sale

CARACTERISTICS

- ▶ **AREA:** Soseaua Chitilei
- ▶ **Land Surface:** 990 sqm
- ▶ **POT:** 60
- ▶ **CUT:** 2.5
- ▶ **End-use:** Rezidential
- ▶ **No. of openings:** 2



DESCRIPTION

The land offered for sale is located on Chitilei Road near Colosseum Mall, Chitila`s Custom and many residential developments.

Land area: 990 sqm

All utilities

Street front: 2 streets

Height: B+GF+4F

POT: 60%

CUT: 2.5

Due to the street location, the land is perfectly suitable for several types of developments.

550,000 EUR + VAT

5.92 BITCOIN + VAT

171.28 ETHEREUM + VAT