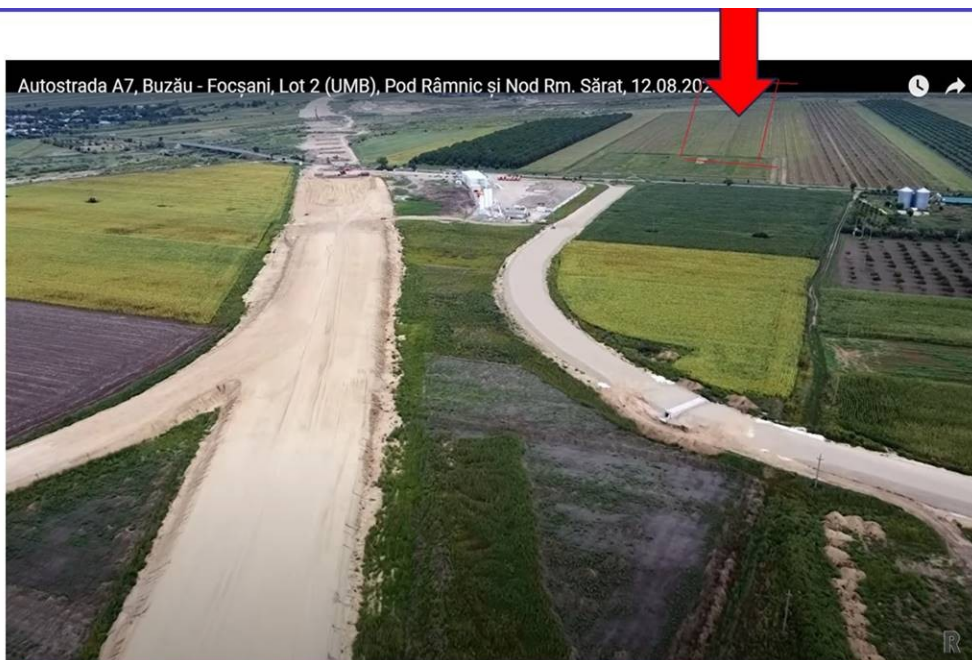


## Ramnicu Sarat

## Land for Sale

### CHARACTERISTICS

- ▶ **AREA:** Ramnicu Sarat
- ▶ **Land Surface:** 98806 sqm
- ▶ **End-use:** Rezidential



### DESCRIPTION

The property offered for sale is situated at aprox 350 m far from the A7 highway junction and at approx. 600 m far from Râmnicu S?rat city. The A7 highway, as planned by authorities, will be ready in 2024 for Râmnicu S?rat area.

The national road DN2 – E85 crosses the city and links it at south to Buz?u, Ploie?ti and Bucharest, and at north to some Moldovian cities: Foc?ani, Bac?u, Roman, and Suceava.

150 km from Bucharest

120 km from International Airport Otopeni

35 km from Buz?u

39 km from Focsani

Râmnicu S?rat has railway system (both for persons and for cargo).

The city has one of the oldest train station in Romania, being part of the National Heritage.

Opportunity Moldavia Highway (A7) – road junction (connection point) in Râmnicu S?rat area:

Râmnicu S?rat area will become a multi-industry Hub.

Râmnicu S?rat area will support the manufacturing and distribution of goods, via A7 highway/railway to Ukraine.

Râmnicu S?rat area is directly connected to:

- Braila – 82 km

- Galati – 98 km

- Constanta Port – 232 km

Râmnicu S?rat has agri-business facilities; will develop processing facilities for food and storage facilities (for cereals and vegetables).

The property has 98.806 sqm and is suitable for a mix used development: services, manufacturing, logistics and green energy production facilities;