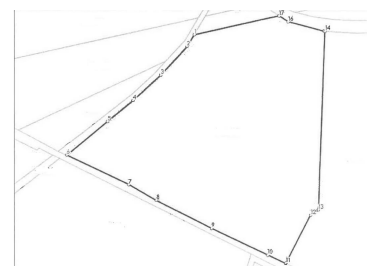
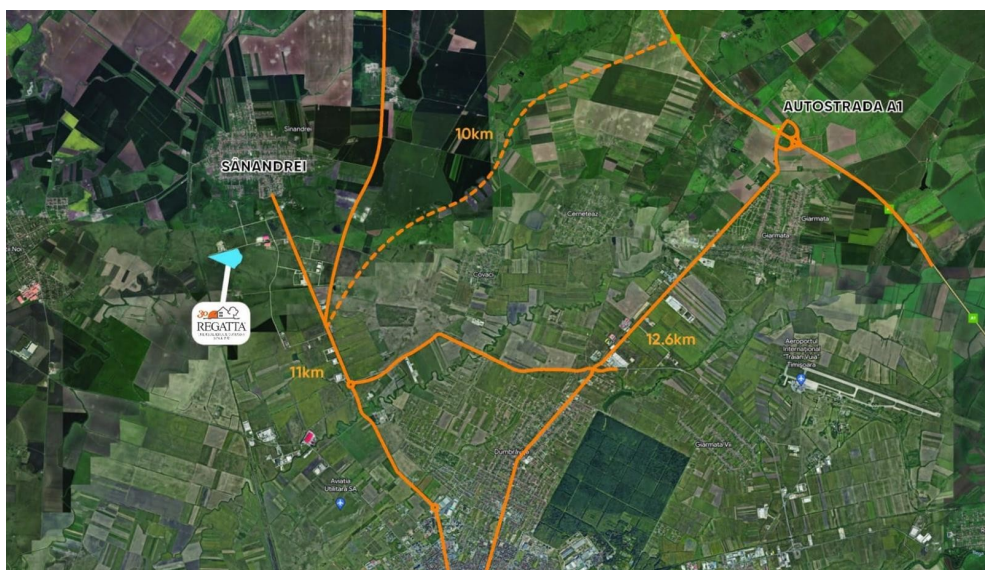


Timisoara

Land for Sale

CHARACTERISTICS

- ▶ **AREA:** Timisoara
- ▶ **End-use:** Rezidential



DESCRIPTION

Land plot for sale located in the north of Timisoara, within Sanandrei commune, in an area that has experienced a strong development during the recent years.

Nearby are industrial, logistic platforms, factories and city's ring road, with the exit to the A1 Highway.

Land area: ~ 14,000 sqm

Information Urbanism: CUT

Opening: Double opening (210 m opening on main road)

Utilities: all utilities;

Owner: Legal person

20 EUR sqm + VAT

0.01 ETHEREUM sqm + VAT