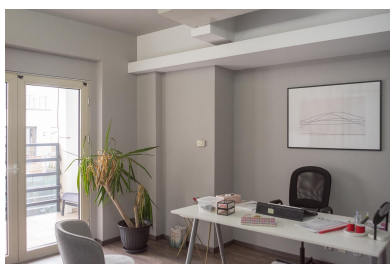
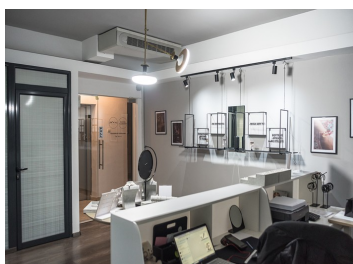


Dorobanti

Offices for Sale

CARACTERISTICS

- ▶ **AREA:** Dorobanti
- ▶ **Usable surface:** 245 sqm
- ▶ **Built surface:** 270 sqm
- ▶ **Floor:** 3
- ▶ **Maximum height:** 2S+P+5E



DESCRIPTION

The building is located in the vicinity of Dorobanti Square, a few minutes away from Charles de Gaulles Square. It benefits from direct access to the central and northern area of the capital.

Facilities:

Own central heating;

air conditioning;

Elevator;

False ceiling;

Exclusive area: 225 sqm

Usable area: 245 sqm

485,000 EUR

5.26 BITCOIN

183.46 ETHEREUM