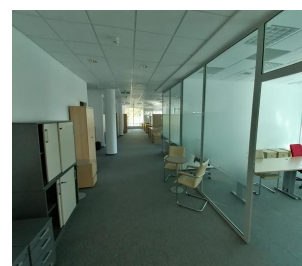
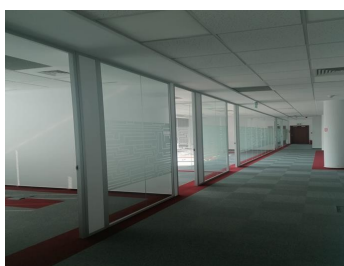


Presei Libere Square

CARACTERISTICS

- ▶ **AREA:** Presei Libere Square
- ▶ **Usable surface:** 24489 sqm
- ▶ **Maximum height:** S+P+5E



DESCRIPTION

Business Center situated in northern side of Bucharest, close to Piata Presei Libere and Herastrau park, benefiting of easy access both to the city center and to the International Airport.

Facilities:

- BMS system;
- heating/cooling system;
- fully equipped kitchen
- conference room;
- false ceiling;
- PC and phone network;
- reception;
- elevators;
- parking places inside / outside (~60 /100 Euro/place + VAT)
- Available surfaces: 250 sqm, 300 sqm, 400 sqm, 500 sqm, 750 sqm; 1.100 sqm;
- Maintenance: 4 Euro/ sqm/ month + VAT
- Add-on factor: 5%

16.50 EUR sqm + VAT

0.01 ETHEREUM sqm + VAT