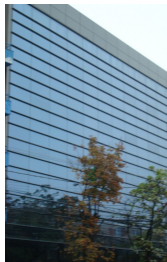


## Herastrau

## Offices for Rent

### CHARACTERISTICS

- ▶ **AREA:** Herastrau
- ▶ **Usable surface:** 1900 sqm
- ▶ **Floor:** Et. 2
- ▶ **Maximum height:** 2S+P+5 E
- ▶ **Subdivision:** open space



### Layout

- Maintenance: 3.8 €/sqm/month + VAT
- Terrace: 5 €/sqm/month + VAT

### DESCRIPTION

The building is located very close to Herastrau Park, on Nicolae Caramfil Boulevard.

Facilities:

- open space
- modern spaces
- air conditioning
- 3 elevators
- sanitary groups
- reception

- security
- parking places (120 / place/month + VAT)