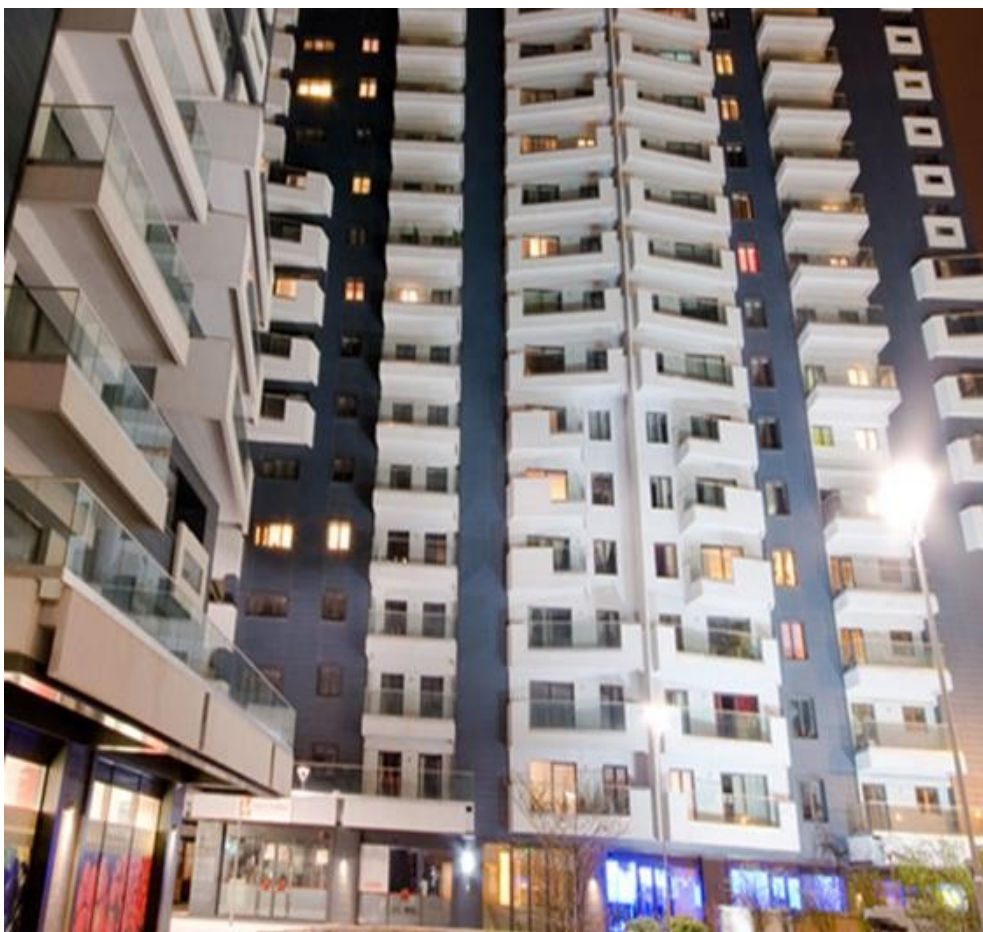


Barbu Vacarescu

Commercial Spaces for Rent

CARACTERISTICS

- ▶ **AREA:** Barbu Vacarescu
- ▶ **Usable surface:** 390 sqm
- ▶ **Built surface:** 330 sqm
- ▶ **Floor:** S+P



DESCRIPTION

The building is situated in Northern side of Bucharest benefiting of easy direct access to Fabrica de Glucoza street and Barbu Vacarescu blvd, at only a few minutes distance from Pipera subway.

Ground floor: 330 sqm

Basement: 60 sqm

Inside was functional a restaurant.

15 €/sqm/month + VAT - ground floor

7 €/sqm/month/ + VAT - basement

Maintenance: 3 €/sqm/month + VAT

15 EUR sqm + VAT

0.01 ETHEREUM sqm + VAT