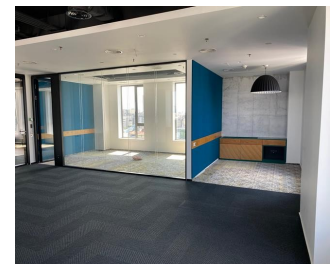
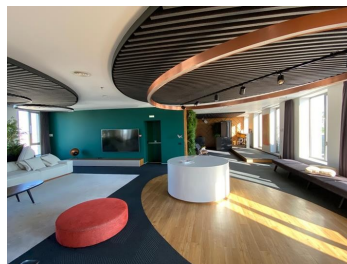


## Calea Victoriei

## Offices for Rent

### CARACTERISTICS

- ▶ **AREA:** Calea Victoriei
- ▶ **Usable surface:** 5147 sqm
- ▶ **Built surface:** 8525 sqm
- ▶ **Floor:** 9
- ▶ **Maximum height:** 3S+P+9E



### Layout

9th floor: 280 sqm  
Terrace: 56 sqm

### FINISHES/EQUIPMENT

▶ **Others:** Video Surveillance , Alarm system, Fire Protection, AC, Elevator, Heating System, Internet and Voice Connection , TV Cable, Storage rooms, Asphalted access, Administrare, Garage, Sandstone, Faience, Insulated Windows

### DESCRIPTION

Office building situated on Calea Victoriei close to George Enescu Square benefiting of easy access to all means of transportation. Also, in the immediate vicinity there are Hilton, Golden Tulip si Novotel Hotels.

#### Facilities:

- easy access, great visibility;
- phone and PC network;
- parking places;
- BMS
- HVAC (4 pipes)

- false ceiling with built-in lighting fixtures

Rental prices:

Rent: 19 €/ sqm/sqm

Maintenance: 514 €/ sqm/ month

Parking places: 150 €/place/month

**19 EUR sqm + VAT**

**0.01 ETHEREUM sqm + VAT**