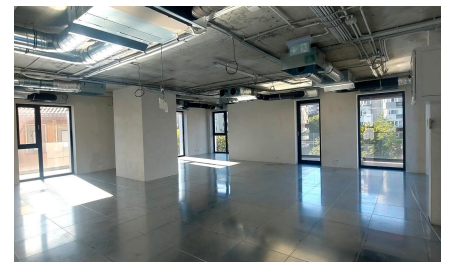
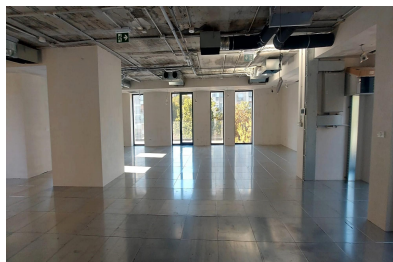
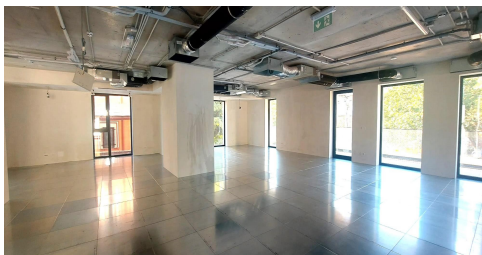


Cotroceni

CHARACTERISTICS

- ▶ **AREA:** Cotroceni
- ▶ **Usable surface:** 1056 sqm
- ▶ **Built surface:** 1185 sqm
- ▶ **Parking places:** 8
- ▶ **Maximum height:** 2S+P+3E
- ▶ **No. of Balconies:** 4



DESCRIPTION

The office building is situated close to the Military Academy, in the immediate vicinity of Cotroceni neighborhood, benefiting of great visibility.

Facilities:

- open space - power generator;
- false ceiling
- insulated windows;
- fire prevention system;
- video surveillance;
- central heating;
- VRV air conditioning
- 8 parking places in the 2nd underground

16,500 EUR

0.29 BITCOIN

5.27 ETHEREUM