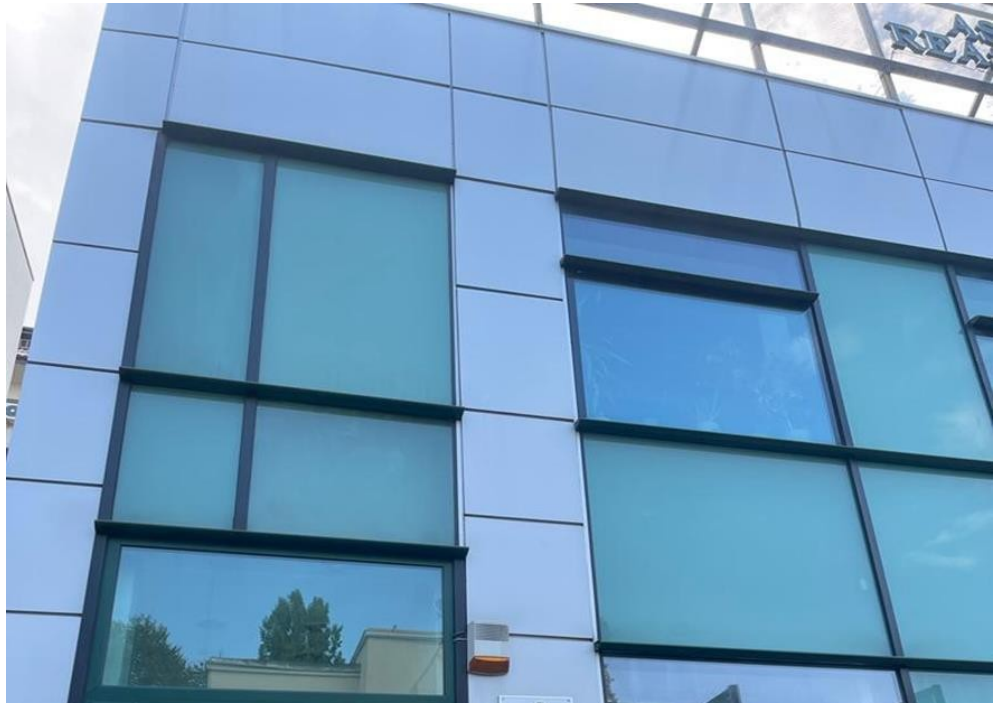


Calea Dorobantilor

Offices for Sale

### CARACTERISTICS

- ▶ **AREA:** Calea Dorobantilor
- ▶ **Built surface:** 350 sqm
- ▶ **Land Surface:** 291 sqm
- ▶ **Maximum height:** S+P+E+M



### DESCRIPTION

The office building is situated at only a few minutes distance from Calea Dorobanti and Dorobanti Square.  
Semi-basement: 2 storage spaces;  
Ground floor: 5 rooms + bathroom;  
1st Floor: open spaces + bathroom + terraces;  
Attic: 3 rooms;

1,150,000 EUR + VAT

12.42 BITCOIN + VAT

367.11 ETHEREUM + VAT