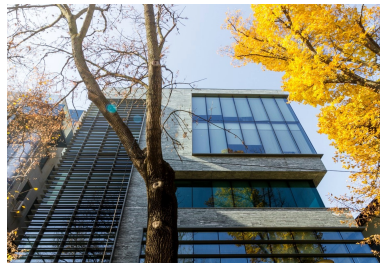
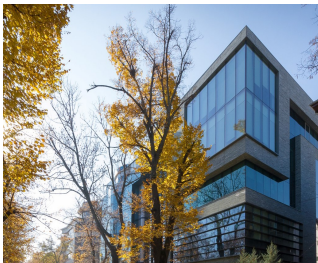


Aviatorilor

CARACTERISTICS

- ▶ **AREA:** Aviatorilor
- ▶ **Usable surface:** 3000 sqm
- ▶ **Floor:** P
- ▶ **Maximum height:** 3S+P+4E



Layout

Available areas:

Ground floor: 200 sqm

Maintenance: 3.75 Euro/ sqm/ month + VAT

DESCRIPTION

The office building is situated very close to Charles de Gaulle Square, on a main boulevard easy accesible from many important point of interest in Bucharest. In the immediate vicinity there are many important public institutions, museums, hospitals or the subway station and Herastrau Park.

Facilities:

reception;

own central heating;

HVAC system;

false system;

PC and phone network

Parking places: 120 Euro/ place/month + VAT

18 EUR sqm + VAT

0.01 ETHEREUM sqm + VAT