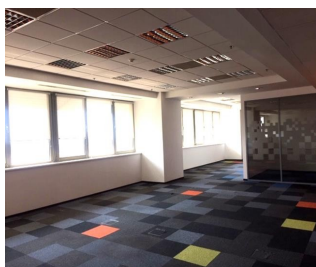
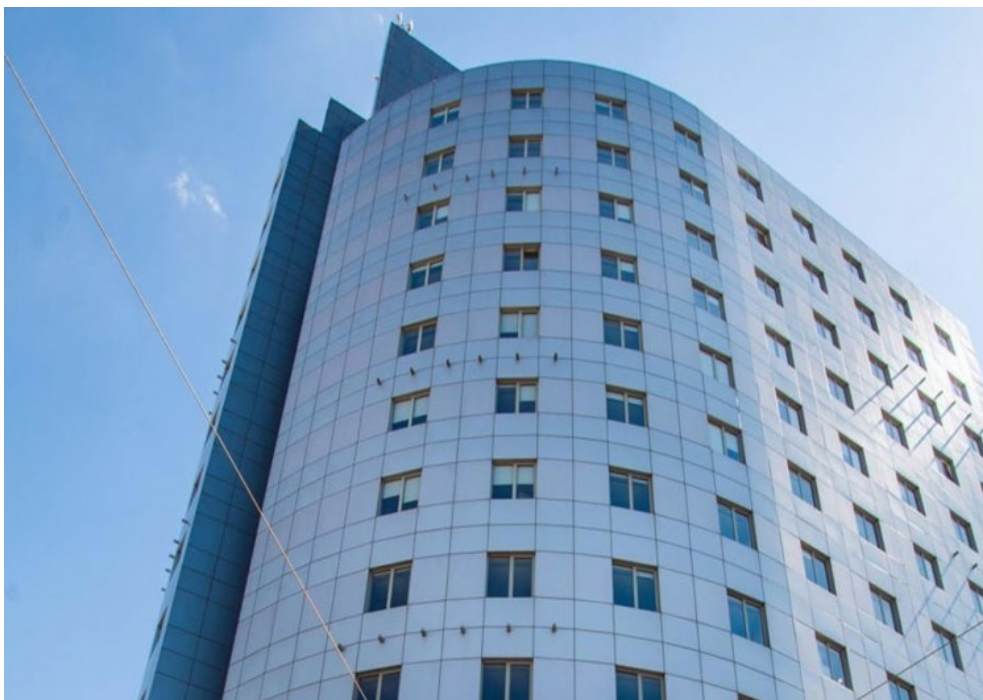


Calea Victoriei

CARACTERISTICS

- ▶ **AREA:** Calea Victoriei
- ▶ **Usable surface:** 12.078 sqm
- ▶ **Floor:** Et.7, Et.14
- ▶ **Maximum height:** S+P+14



Layout

Total usable area: 12,078 sqm

7th floor: 380 sqm

14th floor: 454 sqm

Parking place/ month: 150 Euro

Maintenance: 4 Euro/sqm/month + VAT

FINISHES/EQUIPMENT

- ▶ **Others:** Security, AC, Elevator, Internet and Voice Connection , TV Cable, Sandstone, Faience, Insulated Windows

DESCRIPTION

Office spaces for rent situated very close to Victoriei Square, ultracentral, at only a few minutes distance from the subway station, Government Palace and many bank offices.

Facilities:

false ceiling

HVAC air conditioning system

reception

60 parking place

raised floor

BMS system

16 EUR sqm + VAT

REGATTA® - Leader of Romanian Real Estate Brands
Phone: 021.232.90.12, 021.232.90.88 /// E-mail: office@regatta.ro

*Receiving this presentation represents your agreement that any negotiation regarding this property to take place through the agency of a Regatta rep