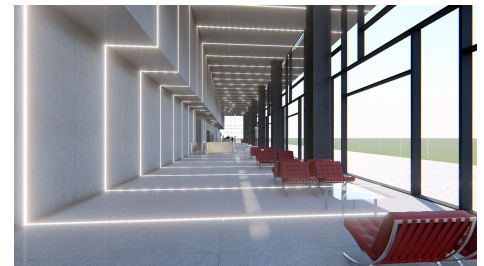
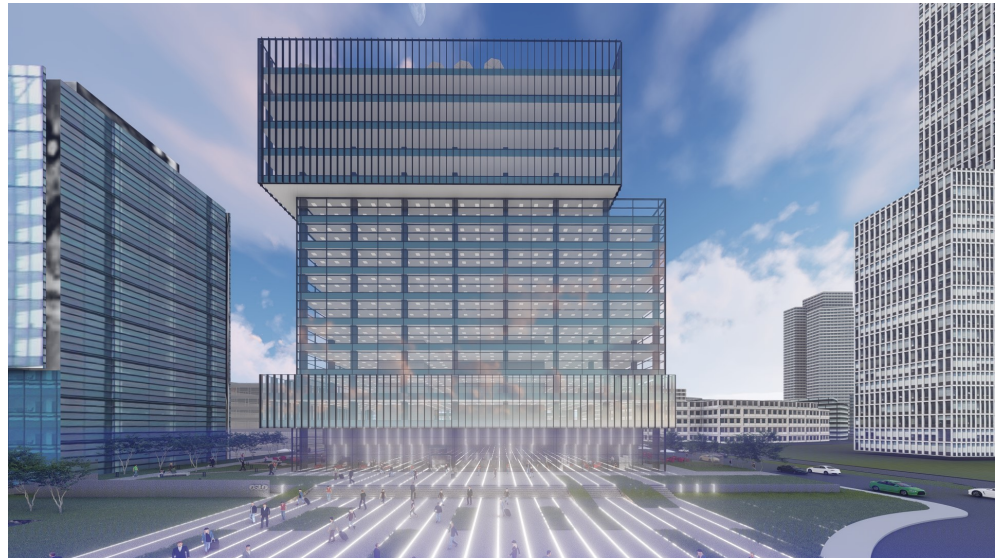


Politehnica

Offices for Sale

**CARACTERISTICS**

- ▶ **AREA:** Politehnica
- ▶ **Usable surface:** 21347 sqm
- ▶ **Built surface:** 24556 sqm
- ▶ **Parking places:** 340
- ▶ **Construction year:** 2021
- ▶ **Maximum height:** 2S+P+14E+1E tehnic



**Layout**

Available area:

1st Floor: 909.28 sqm

2nd Floor: 1,624.91 sqm

3rd Floor: 1,606.86 sqm

4th-9th Floor: 1,408.85 sqm

10th Floor: 1,402.54 sqm

11th-14th Floor: 1,479.05 sqm

15th Floor: 857.92 sqm

**FINISHES/EQUIPMENT**

- ▶ **Others:** Security, Fire Protection, Alarm system, Video Surveillance , AC, Elevator, Heating System, Internet and Voice Connection , TV Cable, Administrare, Garage, Insulated Windows , Sandstone, Faience

**DESCRIPTION**

The office building offered for sale is situated in the central western side of Bucharest the newest business corner of the city, in the center of an animated young people community nest to very close to Polytechnic University. The building is situated close to many commercial centers, the subway station Petrache Poenaru (former Semanatoarea) is situated inside this business park, the project benefiting of all means of transportation, and of an extremely easy access to all the important point of interest in the city.

Facilities:

A+ class office building;

open space;

false ceiling

Natural light;

BMS;  
HVAC;  
Smoke/ fire detectors;  
Social bar at 15th Floor;  
Fire prevention system;  
Access control;  
Server rooms;  
Administration and property management;  
Restaurant;  
Locker room with showers;  
Coffee shop;  
Supermarket;  
8 high speed elevators;  
LED lights;  
Parking places;  
Bicycle parking;  
Loading stations for electric vehicles;  
services for maintenance of the green areas;  
VRF Mitsubishi Electric ventilation system;  
Under authorization for the BREEAM Excellent  
Reception;  
Opening windows;