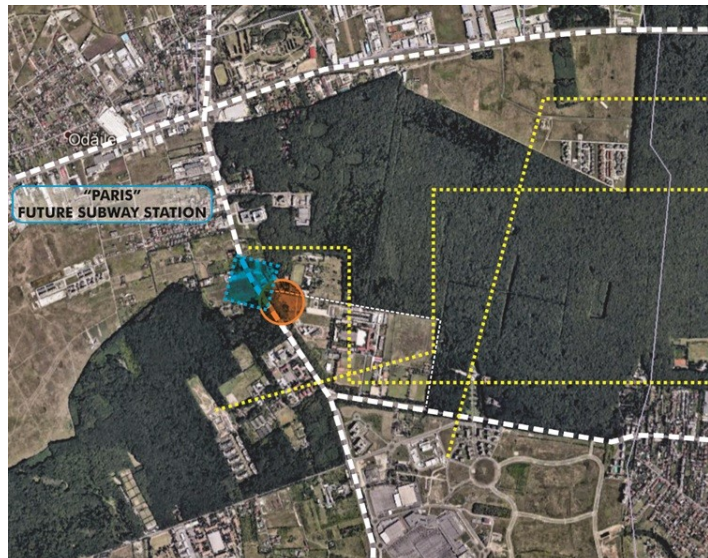


Baneasa

Land for Sale

**CARACTERISTICS**

- ▶ **AREA:** Baneasa
- ▶ **Usable surface:** 16030 sqm
- ▶ **POT:** 60%
- ▶ **CUT:** 2.5
- ▶ **End-use:** Rezidential



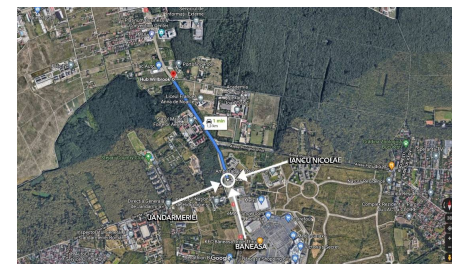
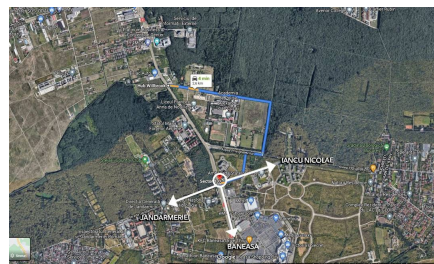
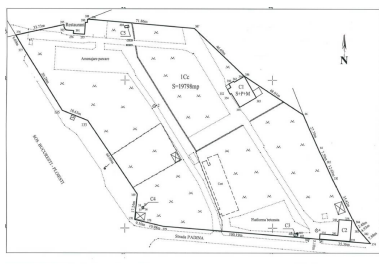
U.S.A. EMBASSY



STEJARII COUNTRY CLUB



FRENCH HIGH SCHOOL



**DESCRIPTION**

North area of Bucharest, right next to the future subway station PARIS.

Vicinities: Baneasa Shopping City, American Embassy, French high school Anna de Noailles, Stejarii Country Club

According to PUG:

Partially M3 – MIXT ~8,100 sqm

Partially V5 – infrastructure protection area, green ~4,460

Partially V7 – forest ~3,400 sqm

The area is part of the PUZ for the 6th subway route.

Urbanism certificate for information.

M3

POT 60% + 75% of the rest with GF+2

CUT 2.5

V5

POT – no object, CUT according to PUZ

Allowed usage – according to the law

V7

– forest

Location North part of Bucharest, proximity of Baneasa forest, close to Baneasa mall and commercial area

Easy access – frontage to DN1 and a secondary street

Future subway station – next to the the land

Property owned by a number of physical persons