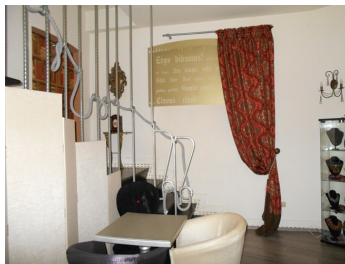


Universitate

Commercial Spaces

CHARACTERISTICS

- ▶ **AREA:** Universitate
- ▶ **Usable surface:** 126.58 sqm
- ▶ **Land Surface:** 400 sqm
- ▶ **Floor:** S + P



DESCRIPTION

The space is located ultra-centrally in the street area behind the Intercontinental Hotel., in a building since 1945. The space is disposed on Ground floor + Basement.

Facilities:

- 2 streets opening;
- fitted-out;
- fitted-out basement for commercial purposes;
- perfect for boutique, coffee shop and/or restaurant.

Available area:

Total U.S. 126.58 sqm
Ground floor: 76.26 sqm
Basement: 50.32 sqm

390,000 EUR

5.06 BITCOIN

234.18 ETHEREUM