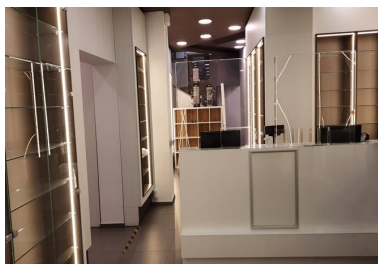


Ion Mihalache Blvd

Commercial Spaces for Rent

CARACTERISTICS

- ▶ **AREA:** Ion Mihalache Blvd
- ▶ **Usable surface:** 143 sqm



DESCRIPTION

The space is located on Ion Mihalache Boulevard, benefiting from maximum visibility, car and pedestrian traffic.

The space is arranged Ground floor + Supanta, with a direct opening to the boulevard

The space is arranged

Own gas plant

It is suitable for commercial, medical, office activities.

Total usable area: 143 sqm

Ground floor: 136 sqm

Withdrawn floor: 7 sqm

4,350 EUR

0.08 BITCOIN

1.39 ETHEREUM