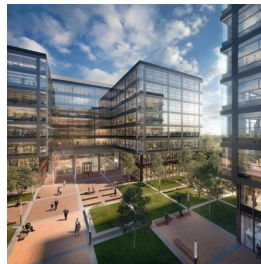


Bucurestii Noi

CARACTERISTICS

- ▶ **AREA:** Bucurestii Noi
- ▶ **Usable surface:** 46000 sqm
- ▶ **Maximum height:** S+P+6E



DESCRIPTION

The office building situated in the Northern side of Bucharest, close to Bazilescu park and Constanta Bridge, benefiting of easy access to all the important point of interest in the city. The subway station Jiului is very close.

Facilities:

- A class office building BREEAM certification
- Medical standard equipment
- UV –C light disinfection
- Touch free smart lifts;
- conference room;
- fitness room;
- false ceiling with built-in LED lamps
- fireproof system
- BMS;
- LED lighting fixtures;
- Parking lots with chargers for electric cars;
- parking for bicycle;
- restaurants;
- locker room, showers for bikers;
- Available areas: 46,000 sqm;
- Surface per floor: 3,000 sqm;

REGATTA® - Leader of Romanian Real Estate Brands
Phone: 021.232.90.12, 021.232.90.88 /// E-mail: office@regatta.ro

*Receiving this presentation represents your agreement that any negotiation regarding this property to take place through the agency of a Regatta rep